



Bookstore Manager

Technical Information Document

Setting Up a WinXP Workstation as a TEMP Server

Document Information:

Category	Software	O/S	WinXP	Last Modified	02/25/04
Author	JA / SP				

Document Summary

Instructions for setting up a Windows® XP Workstation as a TEMP Server.

Document Contents

*****NOTE*** FOR THIS DOCUMENT, WE WILL ASSUME THAT THE GOOD BACKUP IS IN D:\BSMGR\ on the computer named USER01. This is the default location for the Emergency Backup Copy of BSMGR.**

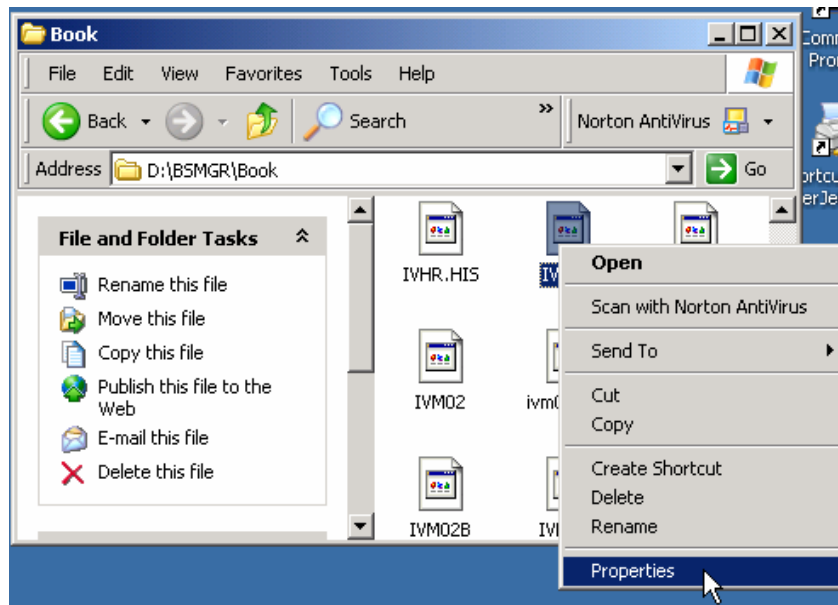
Part 1: Setting Up TEMP Server	2
Verify Backup	2
Move BSMGR Files to the root of D:\.....	3
Sharing the D: drive	4
Changing All Users Startup Shortcuts	5
Changing the Path on the TEMP Server.....	6
Change the Computer Name to USER00.....	7
Setup BSMInet on TEMP Server	8
Changing RMS01's Shortcut to point to D:\.....	10
Add Flag to CBLCONFI to turn off the CB&M Database	10
Turn all Computers Back On.....	11
THINGS TO KEEP IN MIND WHEN RUNNING ON A TEMP SERVER	11
Part 2: Setting up the New/Repaired Server	12
Changing the Path back on USER01.....	12
Change the Computer name back to USER01 on the TEMP Server	13
Remove CBM-FILES N Line from ENV	14
Stopping and Removing BSMINET.....	14
Turn New/Repaired Server On	14
Move BSMGR Data from TEMP Server to New/Repaired Server	14
Moving TEMP Server files to the BSMGR Sub Directory	19
Remapping the Network Drive to the Repaired Server.....	25
Double Checking SCHEDULE for Archive Backup.....	26
NOTE ABOUT NEW/REPAIRED SERVER	26

Part 1: Setting Up TEMP Server

1. Bring up only your USER01 computer which will be your TEMP Server. All other stations will need to be at the Logon prompt or turned off. You will need to logon as Administrator.

Verify Backup

2. You will need to verify that your POS1 Emergency Backup Copy worked. To do this, you will need to go to D:\BSMGR\BOOK in My Computer.
3. Locate the file IVM01, then right click on the file and click properties.

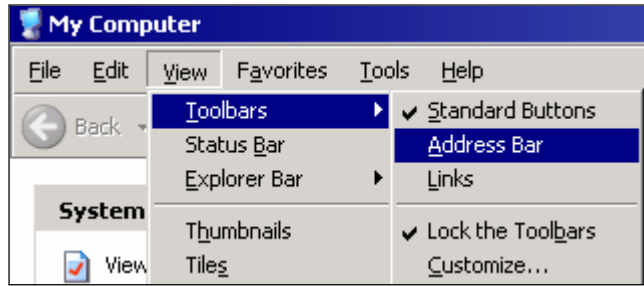


4. Verify that the Last Modified Date is for yesterday's date or the last date your store was open. **IF YOUR DATE IS OLD, YOUR BACKUP IS MOST LIKELY AN OLD BACKUP.**

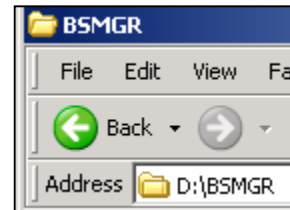
Created:	Today, November 11, 2003, 3:06:17 PM
Modified:	Today, November 11, 2003, 3:35:31 PM
Accessed:	Today, November 11, 2003, 3:39:41 PM

Move BSMGR Files to the root of D:

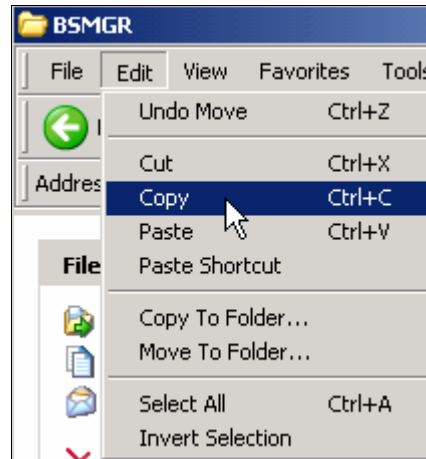
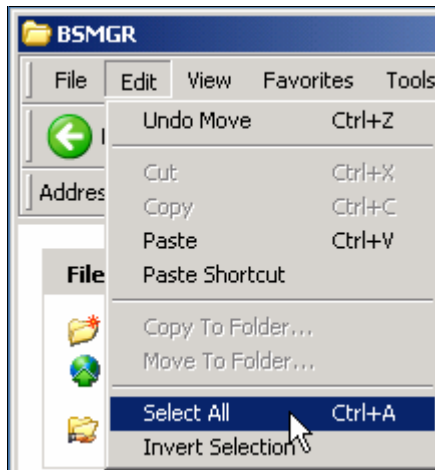
*****NOTE***** Some steps will require that you have the address bar showing in the “My Computer” window. If you don’t have an address bar, click View, then click Toolbars, then click Address Bar.



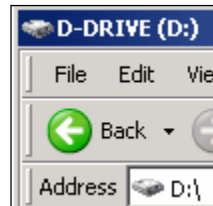
5. Now, assuming that the backup was good, you will need to move the BSMGR folders from D:\BSMGR\ to D:\. To do this, you will need to type D:\BSMGR in the Address Bar in My Computer and press Enter.



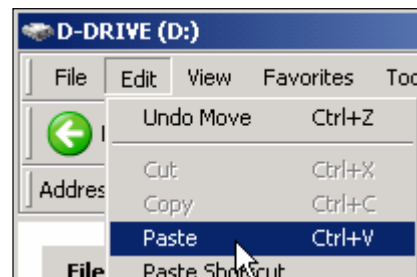
6. Now click Edit and choose Select All. When you select all, all of the folders should be highlighted. Then click Edit and click Copy.



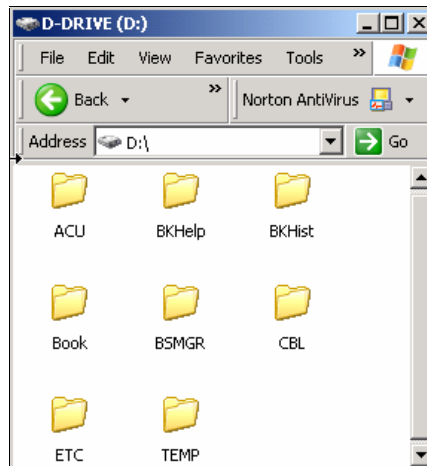
7. Now type D:\ in the Address Bar in My Computer and press Enter.



8. Once you are in the D:\ folder, click Edit and click Paste. You should see it copy all of the folders that were highlighted in D:\BSMGR\ to D:\.



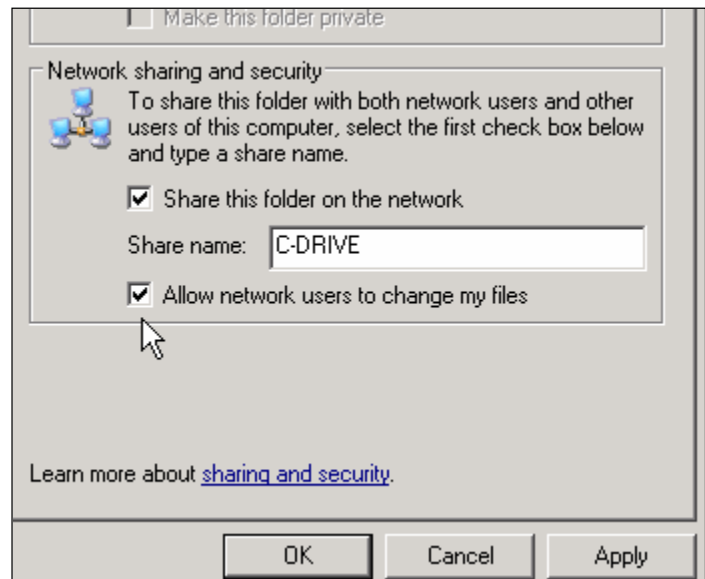
9. After the Paste, it look similar to this:



Sharing the D: drive

10. You will now make sure that the D: drive is shared as C-DRIVE with read/write permissions. To do this, you will need to close My Computer, then re-open My Computer.

- Right Click on the D: drive and then click Sharing and Security.
- Make sure that the check box labeled, "Share this folder on the network" is checked.
- Make sure that the Share Name is C-DRIVE.
- Make sure that the check box labeled, "Allow network users to change my files" is checked
- Click OK.
- Close My Computer

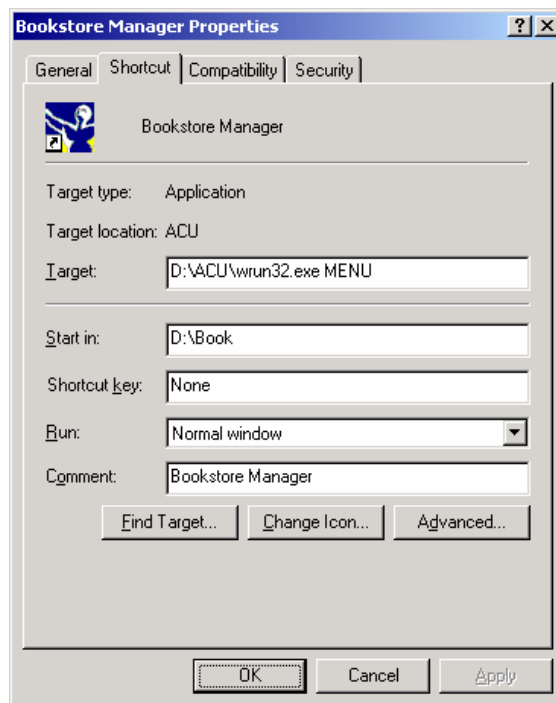


Changing All Users Startup Shortcuts

11. Right click the Start button and choose Open All Users. Double click the Programs folder, and then double click the Startup folder.



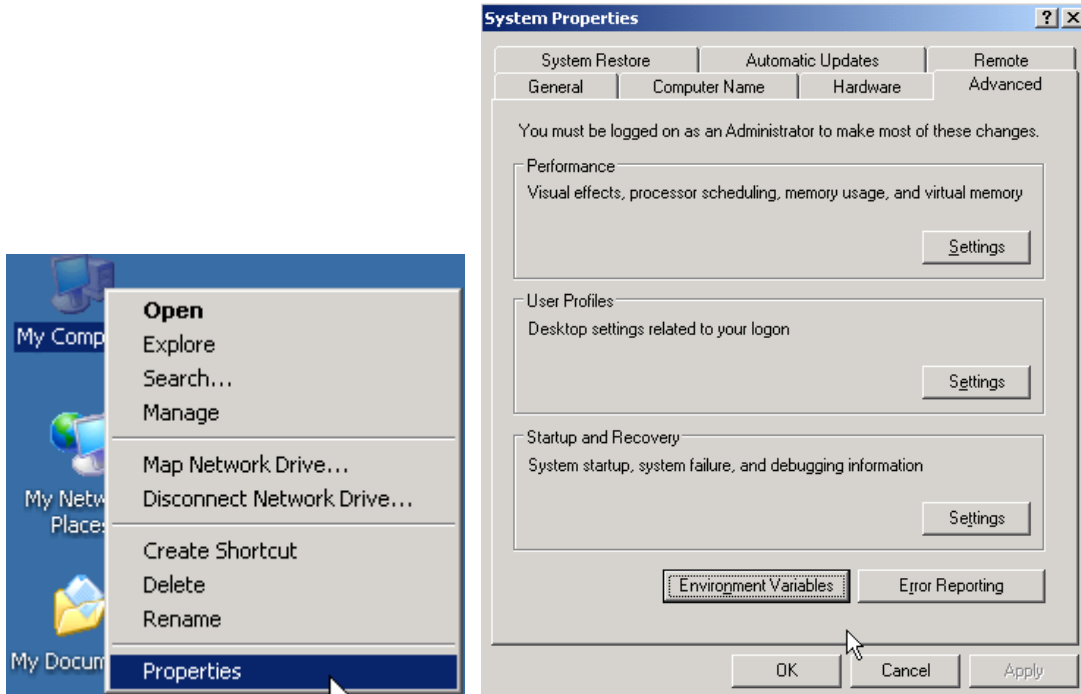
12. Locate your BSMGR shortcut. Right click on the shortcut and click Properties.
(SEE SCREENSHOT FROM STEP 14)
 - Change the target to: D:\ACU\WRUN32.EXE MENU
 - Change the Start in to: D:\BOOK
13. Click OK. Now close the Startup Window.



14. Once you make the change, close Bookstore Manager and go back in.

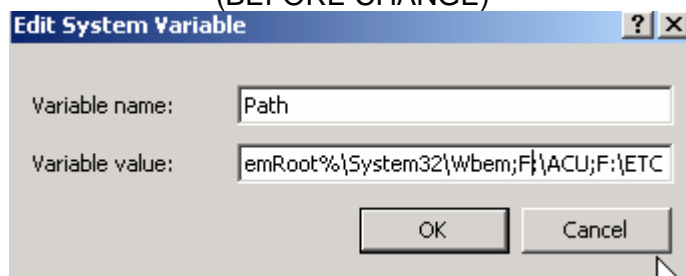
Changing the Path on the TEMP Server

15. Right Click My Computer and click properties, click the Advanced Tab, and click Environment Variables.

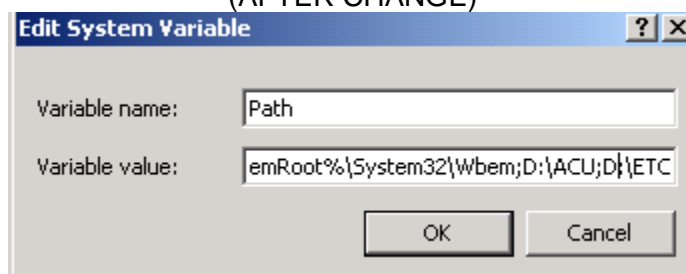


16. Highlight the Path variable in the System Variables, then click Edit. Go to the end of the line where it has F:\ACU;F:\ETC and change it to D:\ACU;D:\ETC. Click OK, then click OK again to get back to System Properties.

(BEFORE CHANGE)

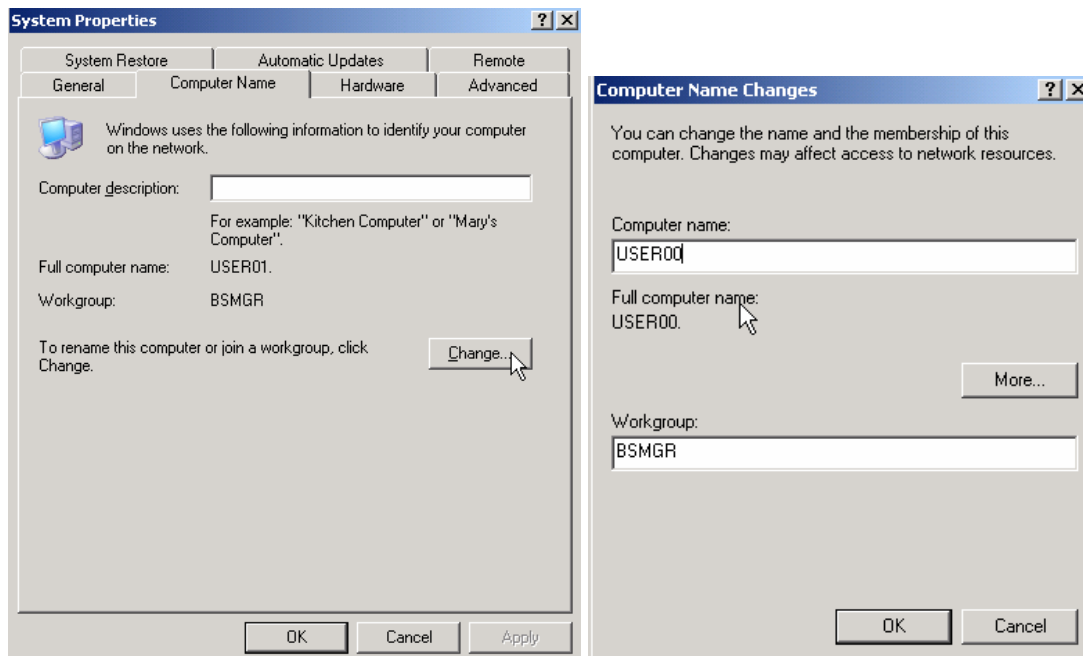


(AFTER CHANGE)

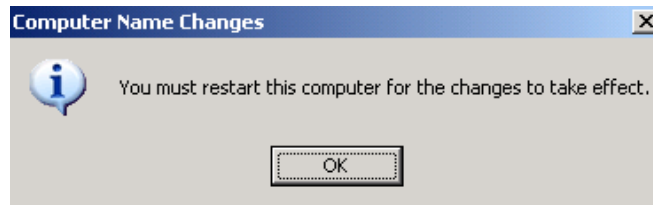


Change the Computer Name to USER00

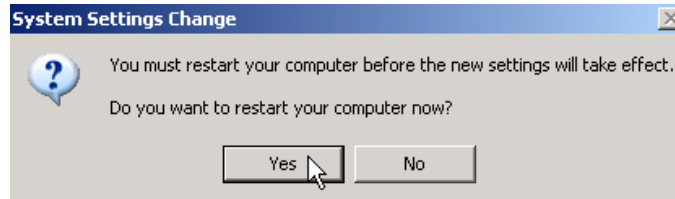
17. Click the Computer name tab. Click Change... Under Computer name, replace USER01 with USER00, then click OK



18. You will be prompted that you need to reboot. Click OK. Click OK again.



19. At the System Settings Change prompt to reboot, click Yes to reboot.

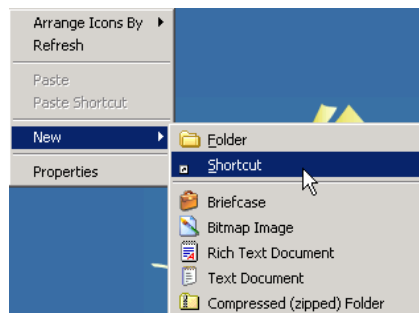


20. After the computer reboots, login as RMS01 as you normally would.

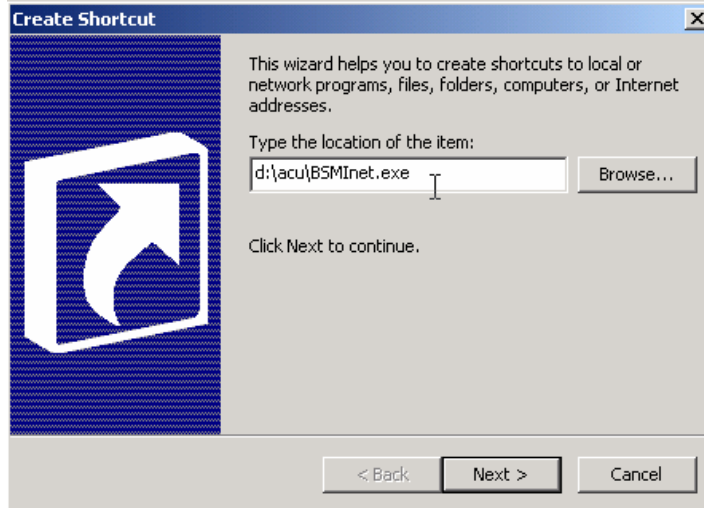
Setup BSMInet on TEMP Server

NOTE ONLY DO THIS STEP IF USING VITAL through BSMGR's Integrated Credit Card or Internet Stock Check / Ordering Programs. If not, proceed to the next step.

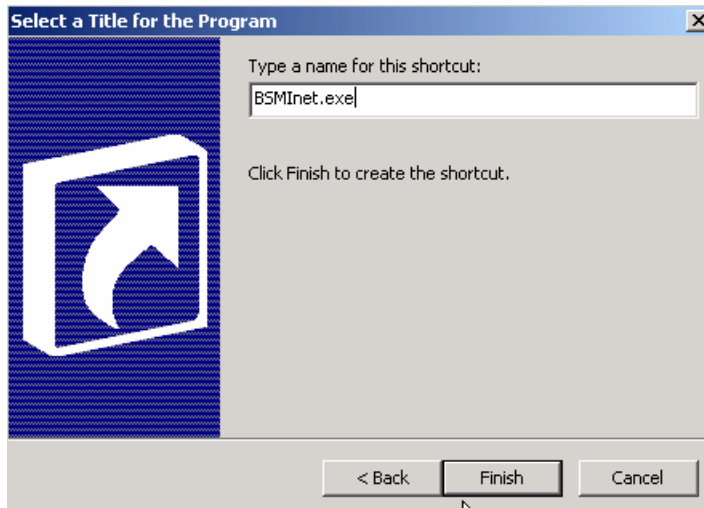
21. On a blank area on the desktop, right click and then choose New, then choose Shortcut.



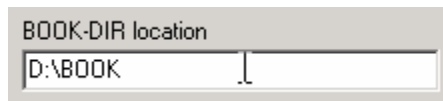
22. Type D:\ACU\BSMINET.EXE for the Location of the item. Click Next



23. For the name, leave BSMInet.exe and then click Finish.



24. Now double click the newly created BSMInet.exe shortcut. Verify that the BOOK-DIR location is D:\BOOK.



25. Right click the World Icon by the Time and choose Hide.



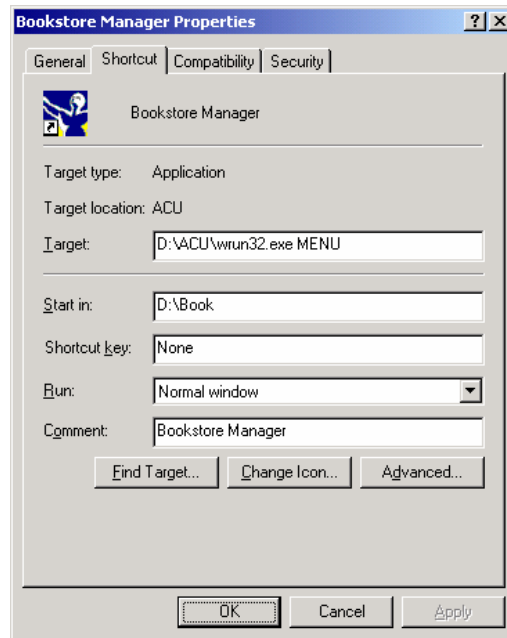
NOTE 1: You will need to manually restart BSMInet each time the Temp Server is restarted.

NOTE 2: If using Vital, you will need to manually settle each night using SLCC.

NOTE 3: If using VITAL, you will want to look at the doc on Emergency Logging in Tutor. This doc explains how to recover your credit card information, sales, Mailing List Additions, and Special Orders.

Changing RMS01's Shortcut to point to D:

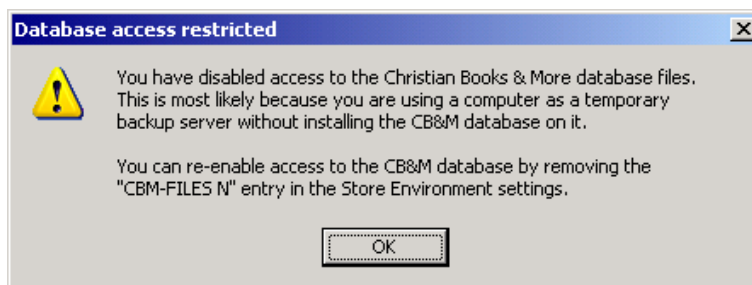
26. Locate your BSMGR shortcut on the desktop. Right click on the shortcut and click Properties.
- Change the target to: D:\ACU\WRUN32.EXE MENU
 - Change the Start in to: D:\BOOK
 - Click OK



Add Flag to CBLCONFI to turn off the CB&M Database

27. Go into BSMGR.
28. At Enter Program Name, type ENV <Enter>
29. Click Add Entry=F6
30. Type: CBM-FILES N <Enter>
31. Click Options=F5 and click Save
32. Exit BSMGR and go back into BSMGR.

*****NOTE***** By adding the **CBM-FILES** line, you will still be able to add inventory to IVM. You will not be able to do IVDI lookups. If you try to do an IVDI search, you will get the following window.



Turn all Computers Back On

33. You may now turn all of your other computers back on.

THINGS TO KEEP IN MIND WHEN RUNNING ON A TEMP SERVER

- You will have NO Report Printer until your server is back up. Any reports that are normally printed will have to wait until you get your server back.
- You will only have the essentials to run RMS. This means you will not be able to see Images, hear Music Samples, no "The Box" off server/stand alone station, no PDA, no iRMS (Remote Manager), no QuickBooks, etc...
- You will not be able to do IVDI searches, but WILL be able to add inventory.
- If you want the Temp Server to do a backup, you will be responsible for backing up your data from the Temp Server to another station **MANUALLY!**

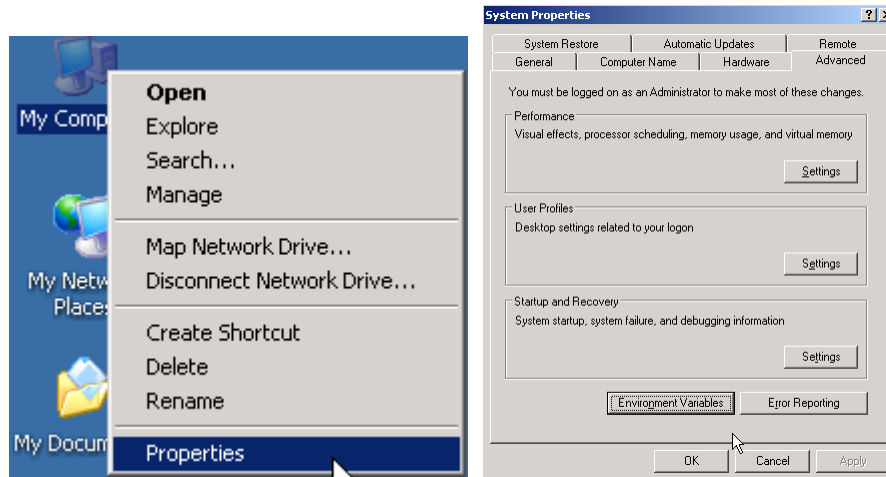
Part 2: Setting up the New/Repaired Server

***NOTE* DO NOT TURN ON THE NEW/REPAIRED SERVER UNTIL STEP #17!**

1. Make sure that only the TEMP Server is turned on. All other computers should be turned off. Logon as Administrator.

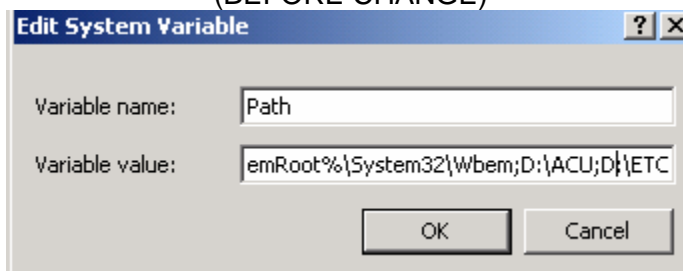
Changing the Path back on USER01

2. Right Click My Computer and click properties. Now click the Advanced Tab. Now click Environment Variables.

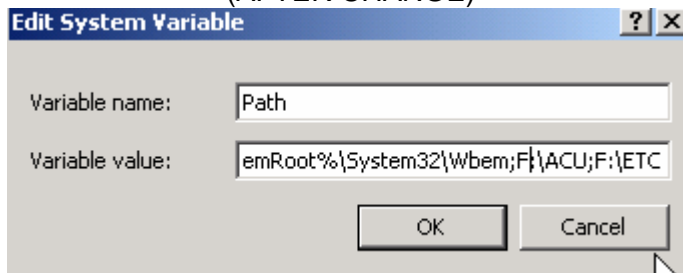


3. Highlight the Path variable in the System Variables and click Edit. Go to the end of the line where it has D:\ACU;D:\ETC and change it to F:\ACU;F:\ETC. Click OK, then click OK again to get back to System Properties.

(BEFORE CHANGE)

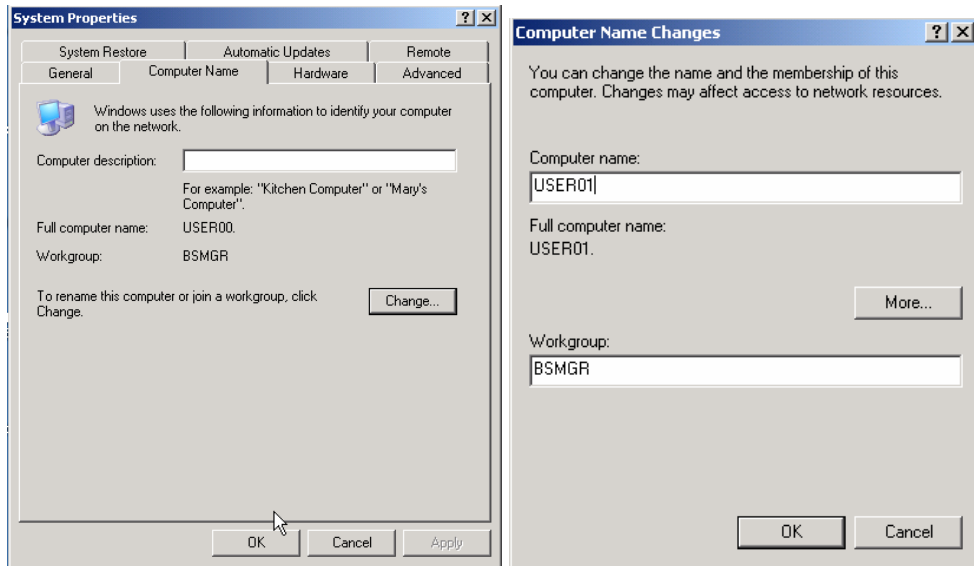


(AFTER CHANGE)

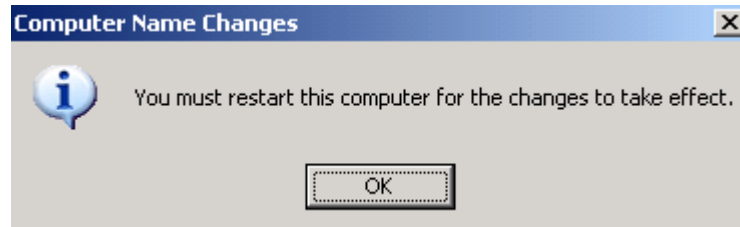


Change the Computer name back to USER01 on the TEMP Server

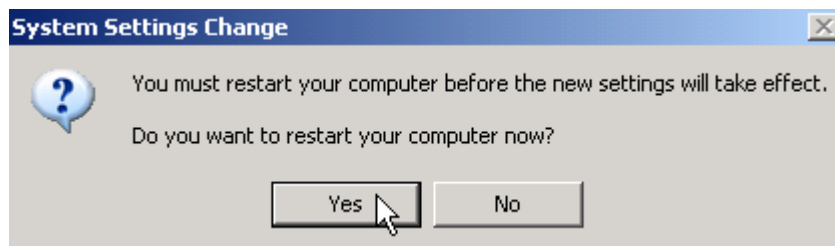
4. Click the Computer name tab. Click Change... Under Computer name, replace USER00 with USER01, then click OK.



5. You will be prompted that you need to reboot. Click OK. Click OK again.



6. At the System Settings Change prompt to reboot, click Yes to reboot.



7. After the reboot, logon as RMS01 as you normally would, but don't start BSMInet.

Remove CBM-FILES N Line from ENV

8. Go into BSMGR.
9. At Enter Program Name, type ENV <Enter>
10. Highlight the line CBM-FILES N
11. Click Delete=F8
12. Click OK to “Are you sure you want to delete”
13. Click Options=F5 and click Save.
14. Exit BSMGR

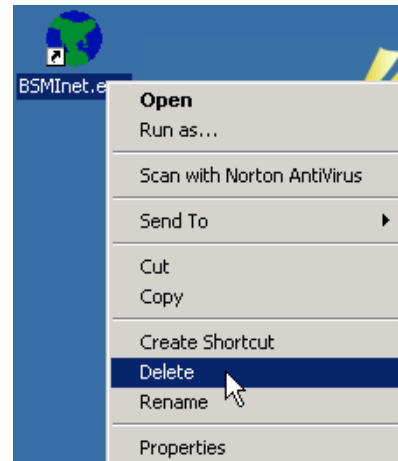
Stopping and Removing BSMINET

*****NOTE*** Only required if using Internet Credit Cards, Internet Ordering, and/or Internet Stock Checks.**

15. Right click on the globe icon by the clock and click Exit.



16. Locate the BSMInet.exe icon on your desktop. Right click on the icon and click delete. You may want to empty the recycle bin.



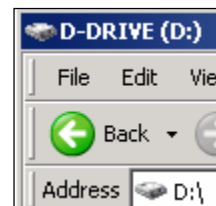
Turn New/Repaired Server On

17. You may now turn on your New/Repaired Server

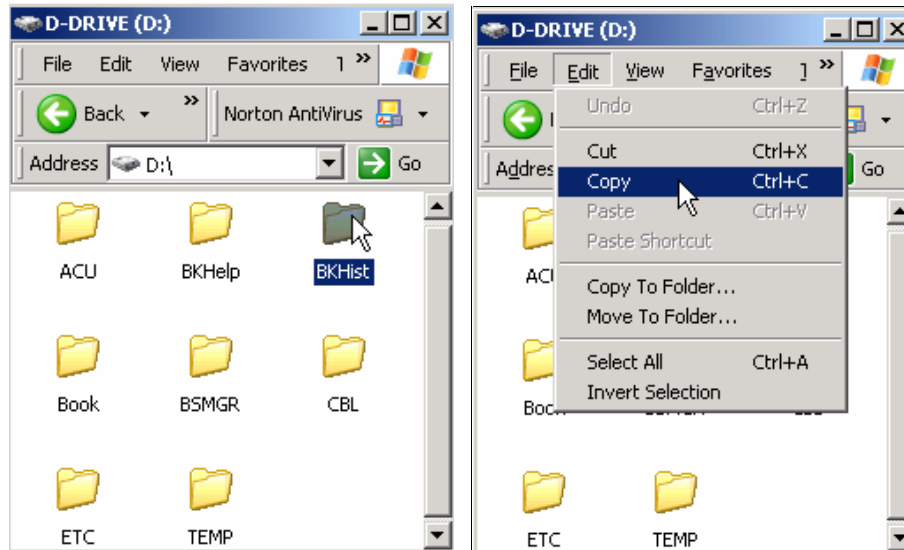
Move BSMGR Data from TEMP Server to New/Repaired Server

18. On the TEMP Server, Double Click My Computer.

19. Now type D:\ in the Address Bar and press Enter



20. Click once on the BKHIST folder. Click Edit and then click Copy.



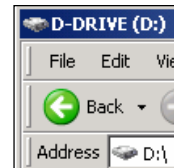
21. In the Address bar, type \\USER00\C-DRIVE and press Enter.



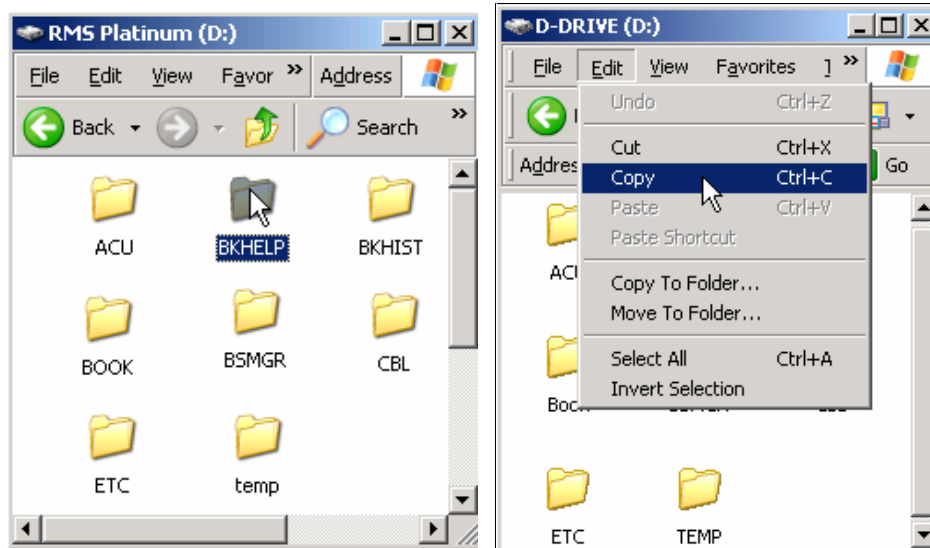
22. Once USER00 comes up, Click Edit and then click Paste. When prompted with, "This folder already contains a folder named 'BKHist'," click Yes to All.



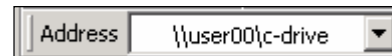
23. Once the copying is finished, type D:\ in the Address Bar and press Enter.



24. Click once on the BKHELP folder. Click Edit and then click Copy.



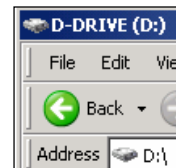
25. In the Address bar, type \\USER00\C-DRIVE and press Enter.



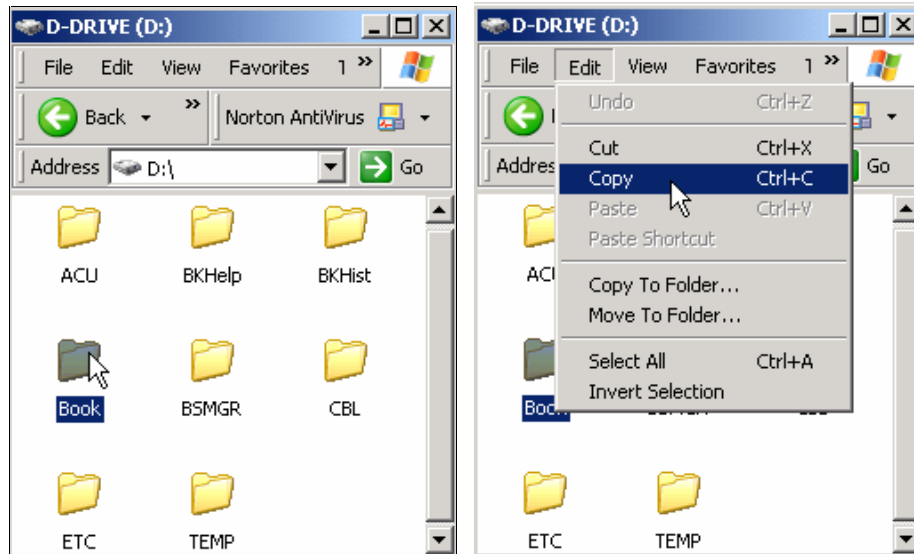
26. Once USER00 comes up, Click Edit and then click Paste. When prompted with, "This folder already contains a folder named 'BkHelp'," click Yes to All.



27. Once the copying is finished, type D:\ in the Address Bar and press Enter.



28. Click once on the BOOK folder. Click Edit and then click Copy.



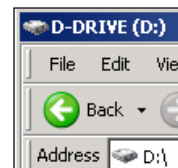
29. In the Address bar, type \\USER00\C-DRIVE and press Enter.



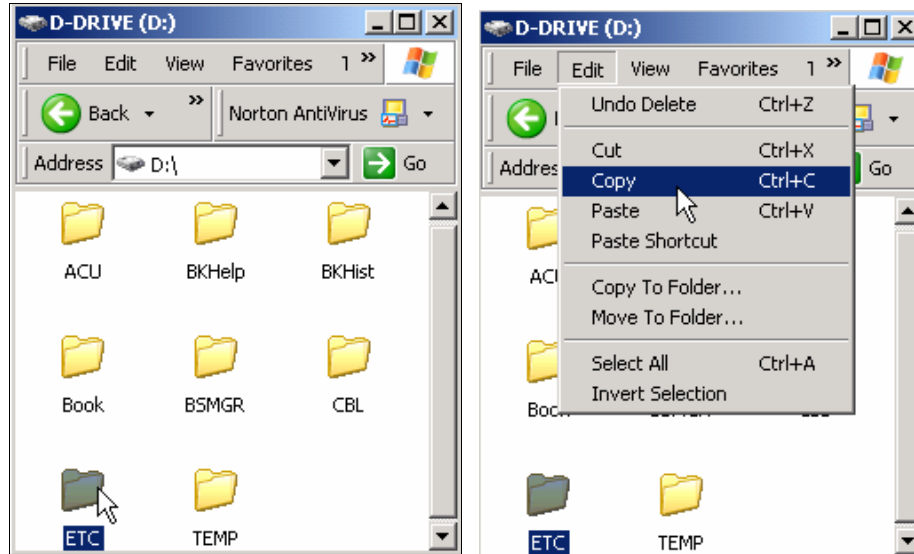
30. Once USER00 comes up, Click Edit and then click Paste. When prompted with, "This folder already contains a folder named 'Book'," click Yes to All.



31. Once the copying is finished, type D:\ in the Address Bar and press Enter.



32. Click once on the ETC folder. Click Edit and then click Copy.



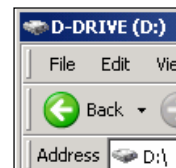
33. In the Address bar, type \\USER00\C-DRIVE and press Enter.



34. Once USER00 comes up, Click Edit and then click Paste. When prompted with, "This folder already contains a folder named 'ETC'," click Yes to All.



35. Once the copying is finished, type D:\ in the Address Bar and press Enter.

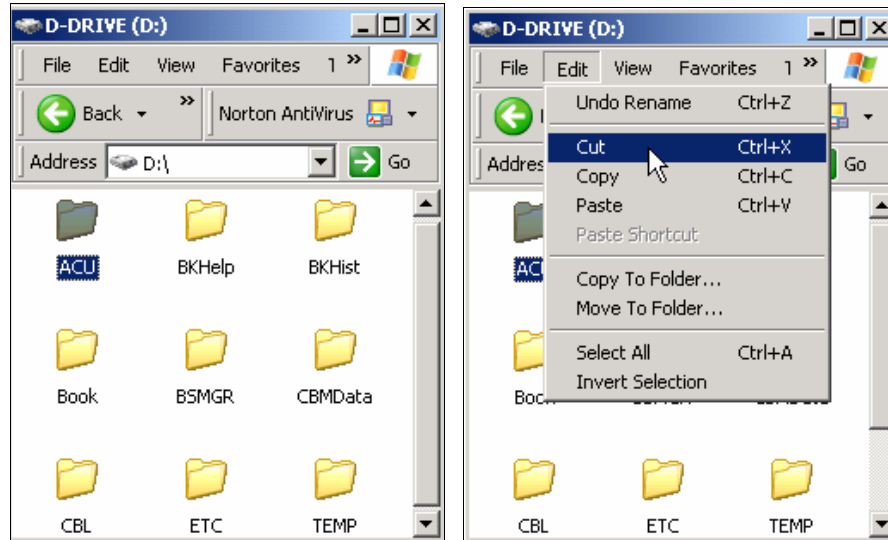


Moving TEMP Server files to the BSMGR Sub Directory

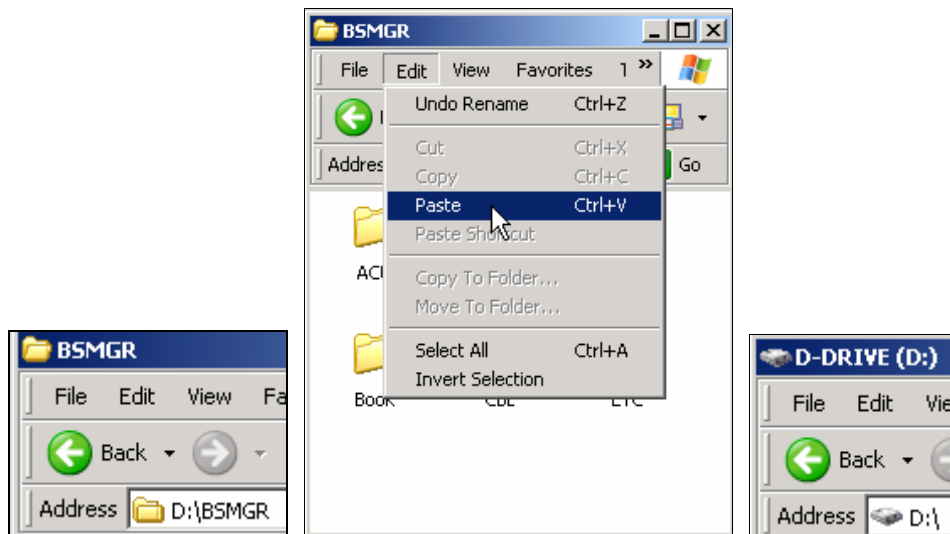
*****NOTE 1***** In this section, if you ever get a prompt that says, “The directory already exist, choose **“Yes to All”**

*****NOTE 2***** If you get an access Denied message, this means that someone is probably still in BSMGR or you did not stop BSMINET

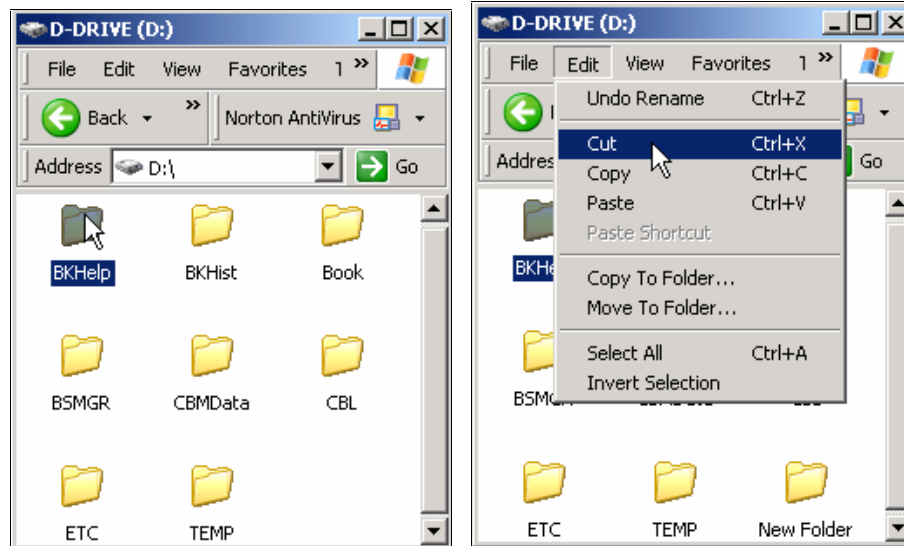
36. Click once on the ACU folder. Click Edit, and then click Cut.



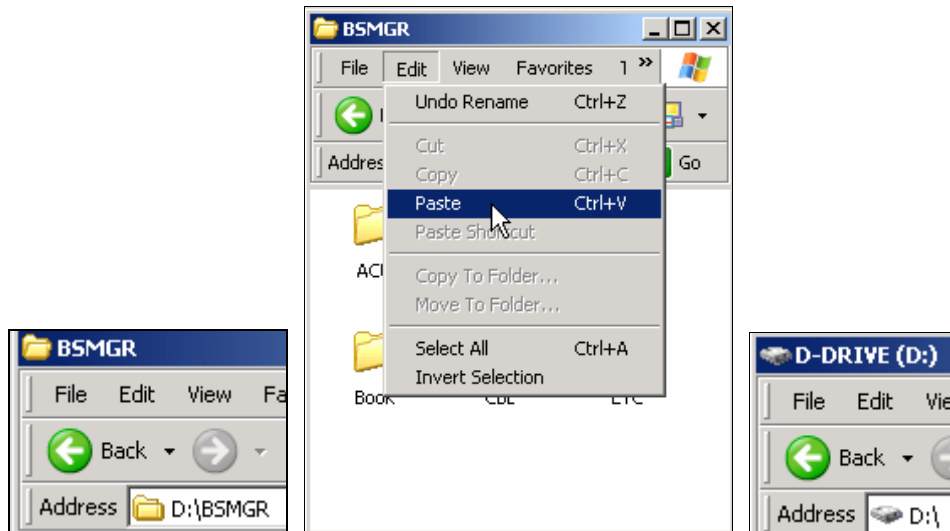
37. In the Address Bar, type D:\BSMGR and press Enter. Then Click Edit and Click Paste. Once the copying is finished, type D:\ in the Address Bar and press Enter..



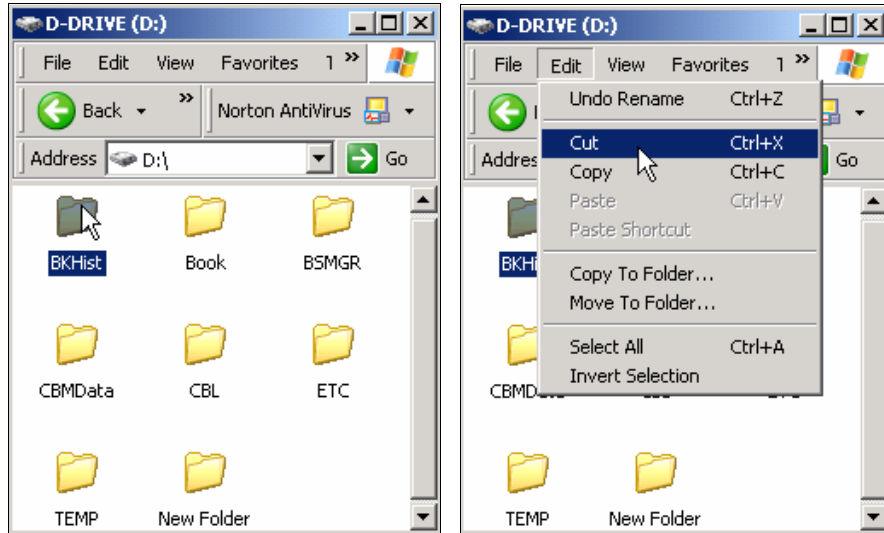
38. Click once on the BKHelp folder. Click Edit, and then click Cut.



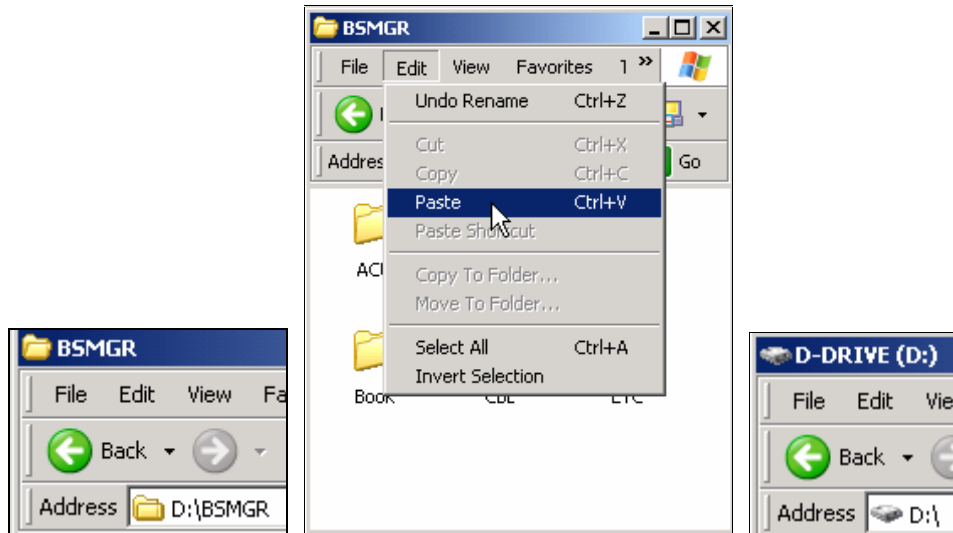
39. In the Address Bar, type D:\BSMGR and press Enter. Then Click Edit and Click Paste. Once the copying is finished, type D:\ in the Address Bar and press Enter..



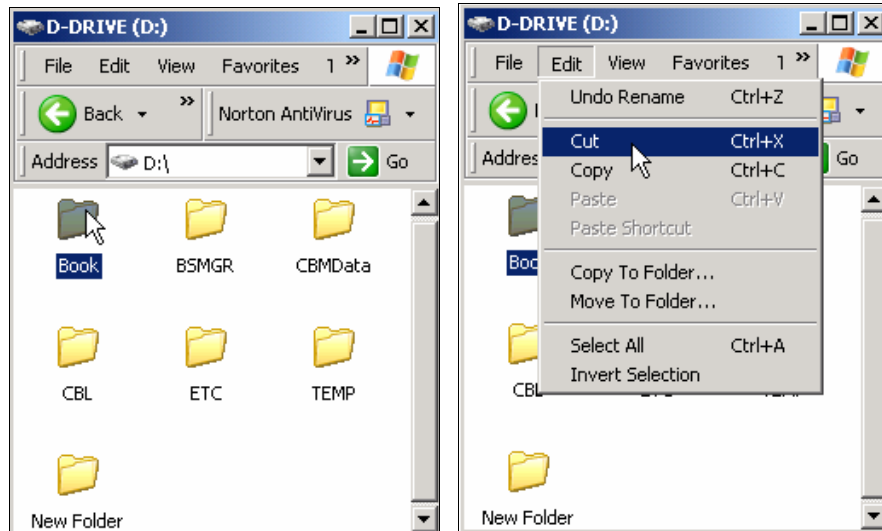
40. Click once on the BKHist folder. Click Edit, and then click Cut.



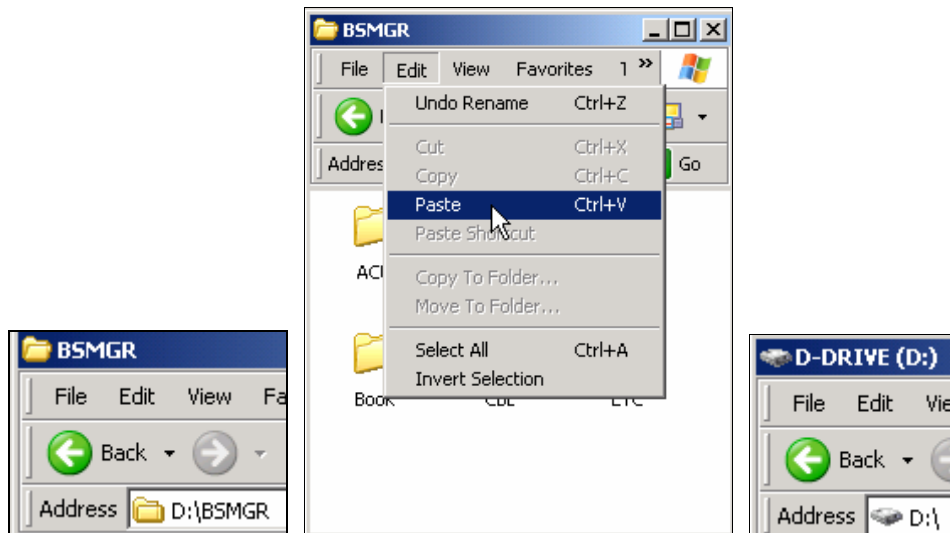
41. In the Address Bar, type D:\BSMGR and press Enter. Then Click Edit and Click Paste. Once the copying is finished, type D:\ in the Address Bar and press Enter..



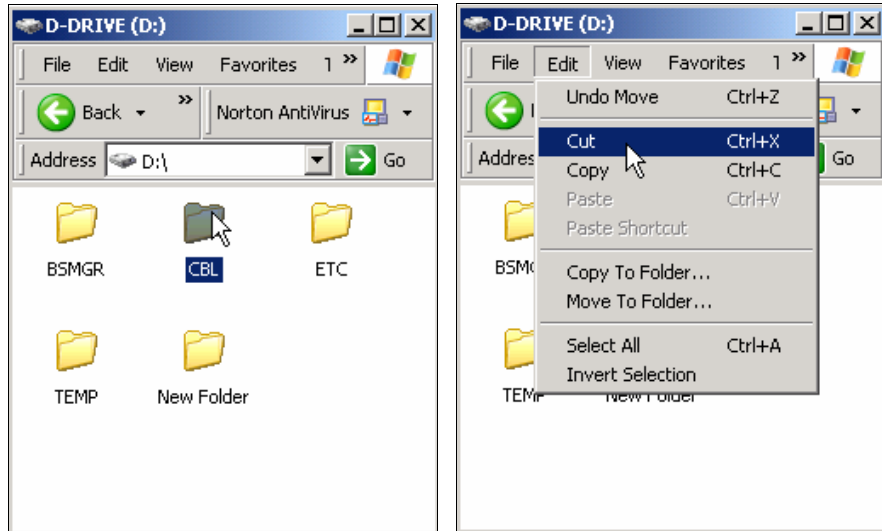
42. Click once on the Book folder. Click Edit, and then click Cut.



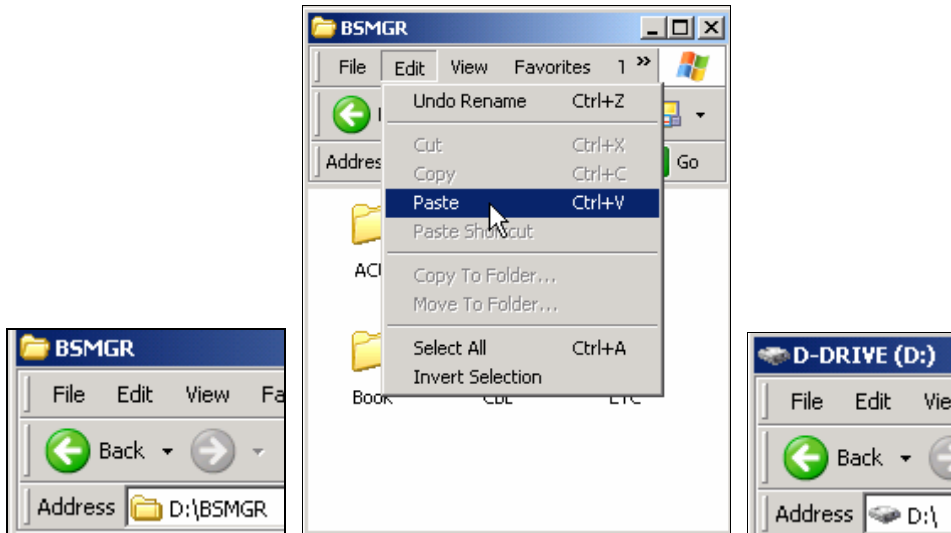
43. In the Address Bar, type D:\BSMGR and press Enter. Then Click Edit and Click Paste. Once the copying is finished, type D:\ in the Address Bar and press Enter..



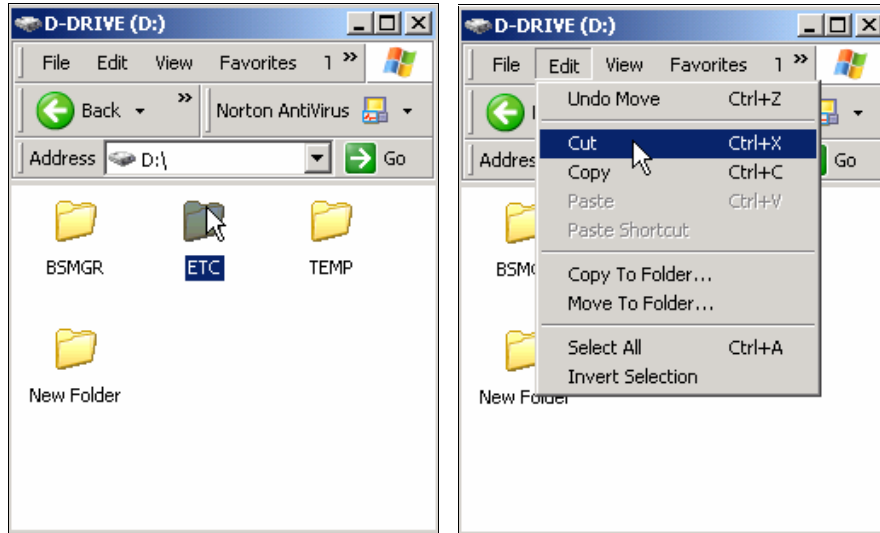
44. Click once on the CBL folder. Click Edit, and then click Cut.



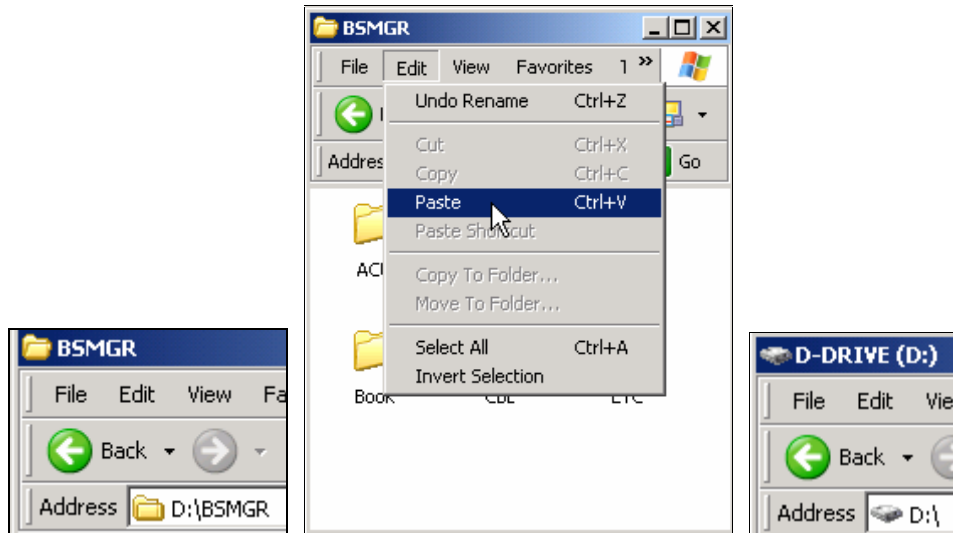
45. In the Address Bar, type D:\BSMGR and press Enter. Then Click Edit and Click Paste. Once the copying is finished, type D:\ in the Address Bar and press Enter..



46. Click once on the ETC folder. Click Edit, and then click Cut.



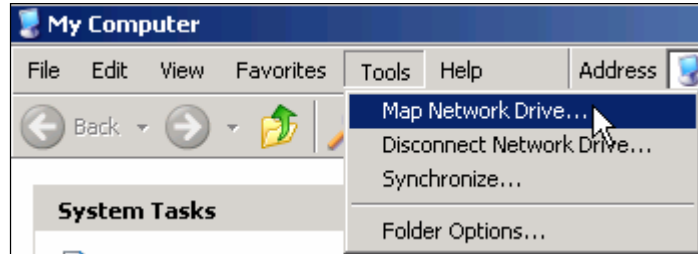
47. In the Address Bar, type D:\BSMGR and press Enter. Then Click Edit and Click Paste. Once the copying is finished, type D:\ in the Address Bar and press Enter..



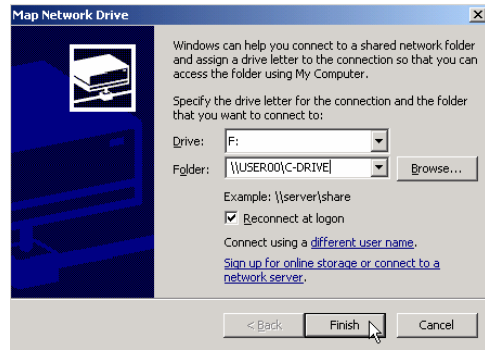
Remapping the Network Drive to the Repaired Server

48. Go into My Computer.
49. Look for an F:\ drive. If you have an F: drive, skip to **Double Checking SCHEDULE for Archive Backup**, otherwise continue with next step.

50. Click Tools, then click Map Network Drive...

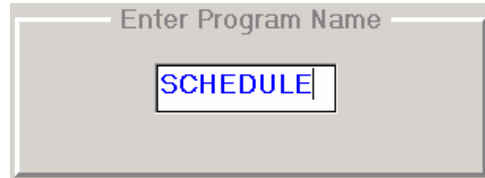


51. For Drive, select F:
52. For Folder, type: \\USER00\C-DRIVE
53. Make sure reconnect at logon is checked.
54. Click Finish
55. Once it brings up the window, just close it.
56. Close My Computer.

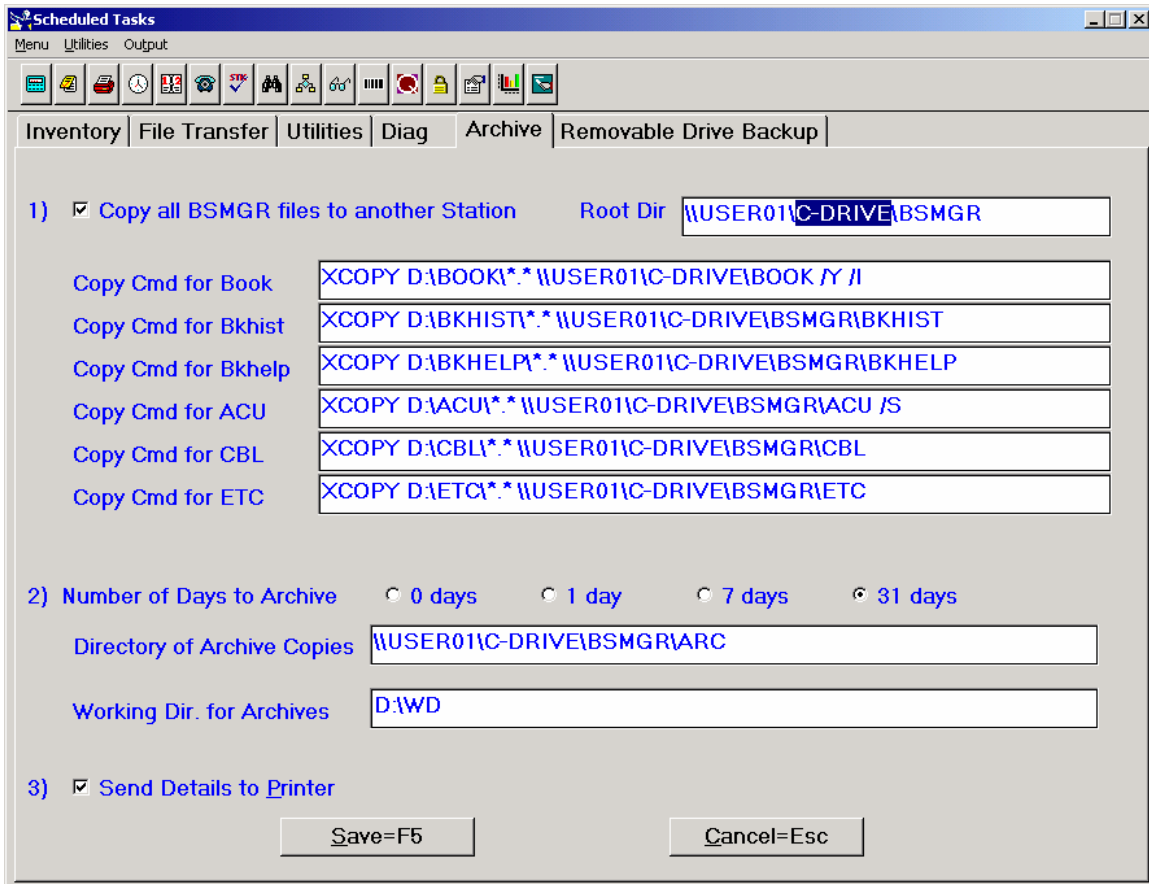


Double Checking SCHEDULE for Archive Backup

57. If you had to change the Share Name in Part 1, Step 10 to C-DRIVE from D-DRIVE, you will need to change SCHEDULE also. To do this, go into SCHEDULE at Enter Program Name.



58. Click on the Archive tab. Verify that it is using C-DRIVE and not D-DRIVE for all references for \\USER01



NOTE ABOUT NEW/REPAIRED SERVER

- Any optional features that you have purchased from BSMGR will need to be reinstalled and/or reconfigured. These would include BSMInet, iRMS, "The Box", AcuServer, PDA, etc....