



Bookstore Manager

Technical Information Document

Windows XP PRO Setup for Network Servers

Document Information:

Category	Hardware	O/S	WinXP PRO	Last Modified	09/25/03
Author	JA				

Document Summary

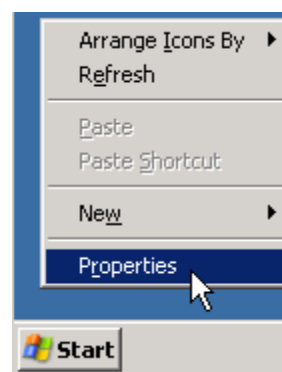
Instructions for setting up Windows XP PRO as a Network Server for BSMGR.

Document Contents

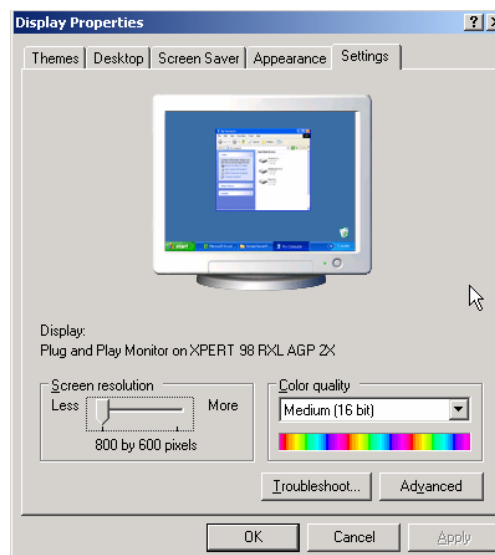
NOTE: These instructions must be followed after installing the BSMGR RMS CD's. Please log in as the Administrator account.

Screen Size and Task Bar

- Right click on the desktop and click properties.



- Go to the Settings Tab and set the screen resolution to 800 X 600 and Colors to 16bit, click OK. Answer Yes to the question that comes up.

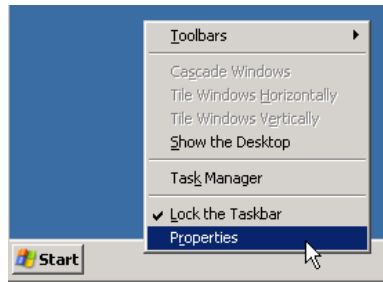


Bookstore Manager A head for your business. A heart for your ministry.

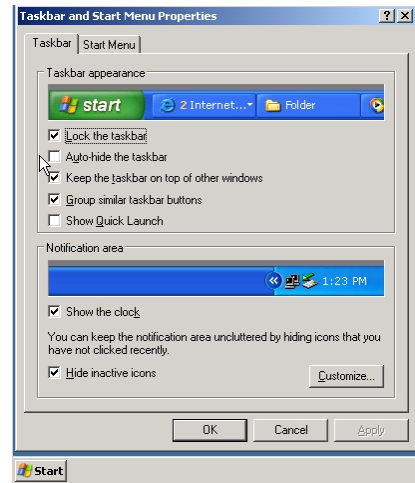
Bookstore Manager • 201 Fannin Street • Abilene, Texas • 79603 •
tel. 1-800-997-6724 • fax 1-325-673-0527 • www.bsmgr.com

Total Technology Solutions!

- Right click on the Task Bar and click Properties

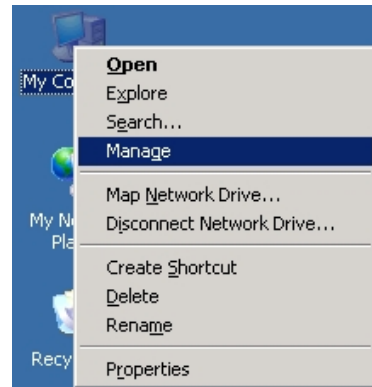


- Ensure that the check box that says Auto Hide is unchecked and click OK

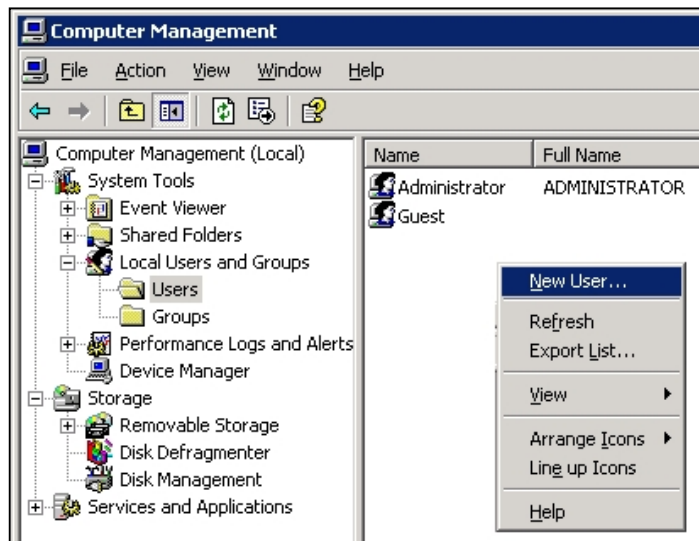


Creating USER Accounts

- Right click My Computer, then click Manage



- On the left hand side, click the plus sign next to Local Users and Groups
- Click the Users Folder
- In a blank area on the right hand side, Right click and choose New User...



- For User name, put RMS00
- For Full name, put RMS00
- For Description, put POS/Workstation
- Leave Password and Confirm Password blank
- Uncheck the box labeled, “User must change password at next logon”
- Check the box labeled, “User cannot change password”
- Check the box labeled, “Password never expires”
- Click the Create button
- Click the Close button

New User [?] [X]

User name: RMS00

Full name: RMS00

Description: POS/Workstation

Password: []

Confirm password: []

User must change password at next logon

User cannot change password

Password never expires

Account is disabled

Create Close

- You should now see the newly created RMS00 account listed.

- Double click on RMS00.
- Click the 2nd tab labeled, “Member Of”
- You should see the name Users listed under Member of:
- Click the Add... button

RMS00 Properties [?] [X]

General Member Of Profile

Member of:

Users

Add... Remove

OK Cancel Apply

- You will now see a Select Groups window.
- Under Enter the object names to select, type in the word: Administrators
- Click OK

Select Groups [?] [X]

Select this object type:

Groups [Object Types...]

From this location:

USER00 [Locations...]

Enter the object names to select (examples):

Administrators [Check Names]

Advanced... OK Cancel

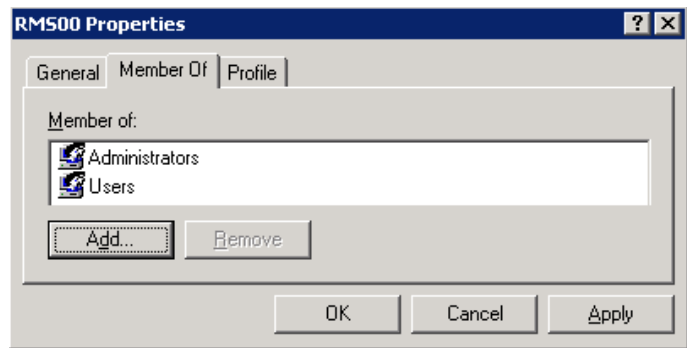
- You should now see both Administrators and Users under Member of:

- Click OK

NOTE

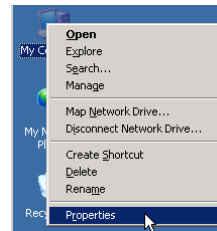
You will need to do the above steps for adding RMS01-RMS09. You will also need to create a USER09 account.

- Once you are finished adding users, you can click the X in the top right window to close Computer Management.

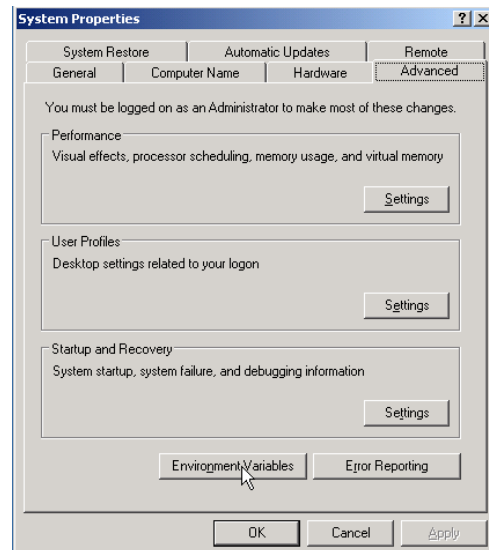


Windows XP Pro Environment Settings

- Right click on My Computer
- Click Properties



- Click the Advanced Tab
- Click the Environment Variables button

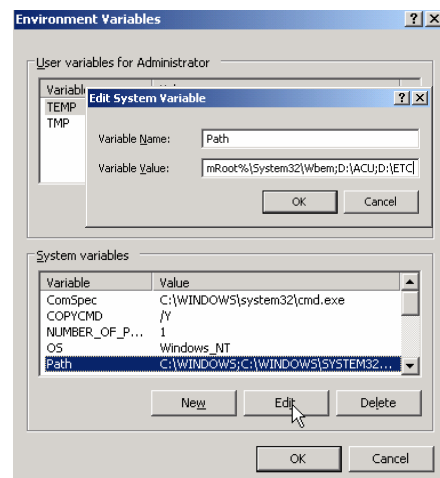


- Select PATH in the System Variables
- Click the Edit button
- Go to the end of the Variable Value field and type:

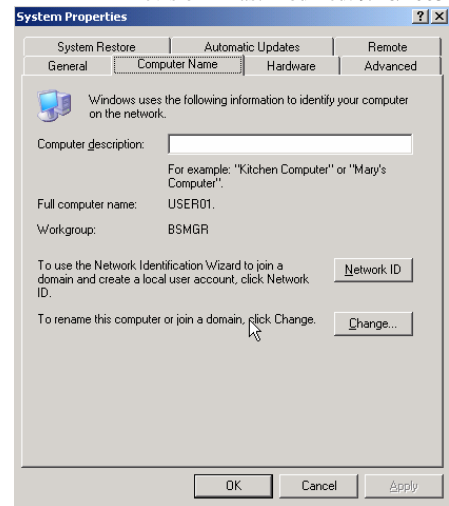
;D:\ACU;D:\ETC

Note: Replace D with the drive letter that RMS is installed on

- Click OK
- Click OK



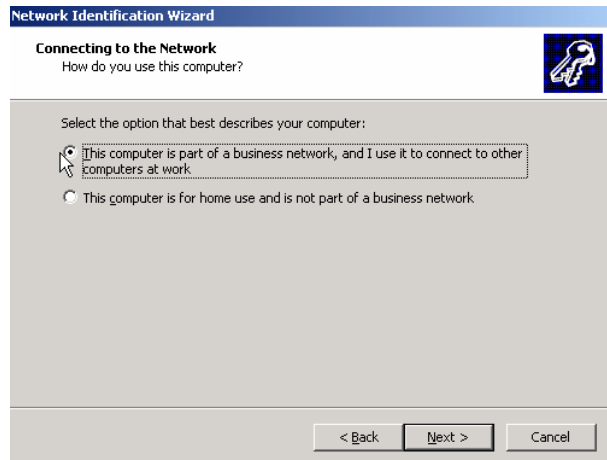
- Click the Computer Name Tab
- Click the Network ID button



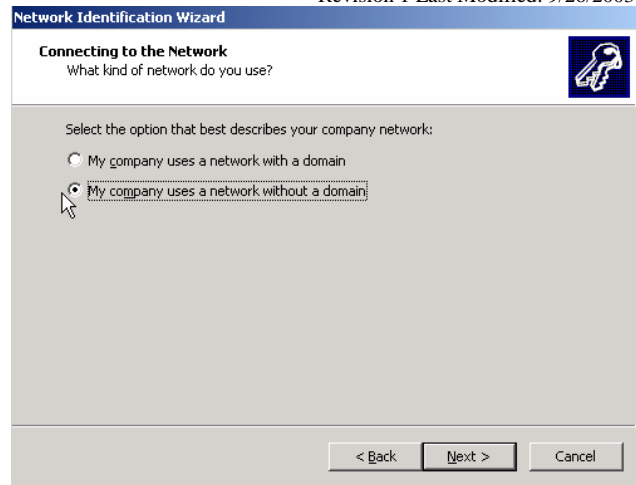
- At the, “Welcome to the Network Identification Wizard” Click Next.



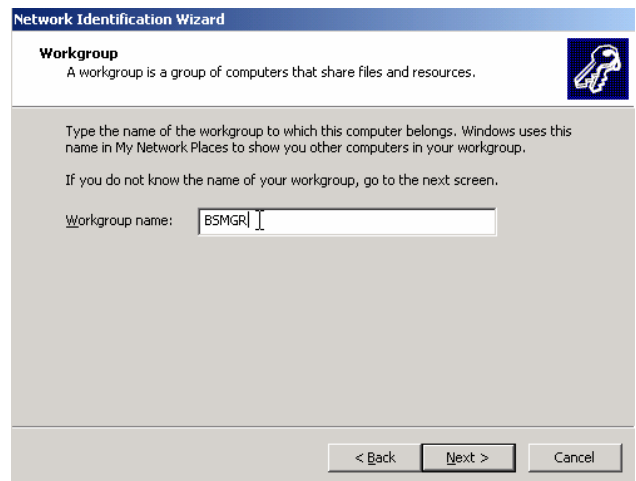
- Click the radio button: This computer is a part of a business network, and I use it to connect to the other computers at work and then click Next.



- Click the radio button: My company uses a network without a domain and then click Next.



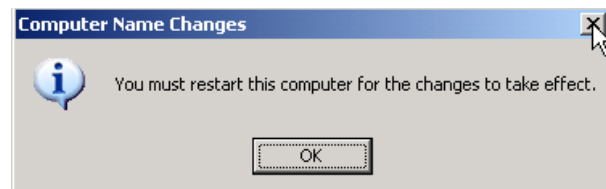
- Change the Workgroup to BSMGR
- Note: If you choose to use a different workgroup name, ALL computers in your store network, including Quest units, must have the same workgroup name.
- Click Next



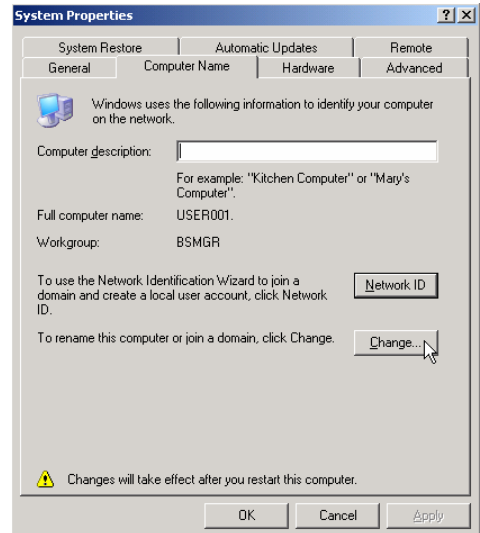
- At the Completing The Network Identification Wizard, click Finish



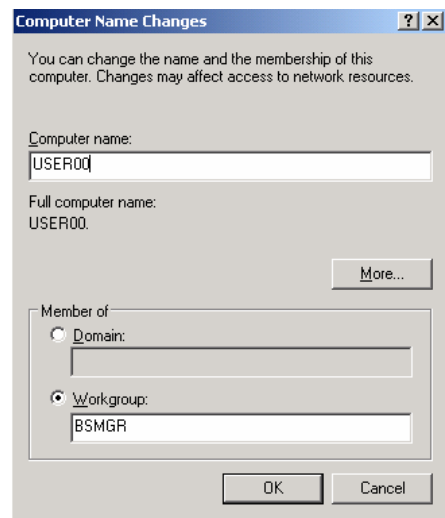
- If prompted to reboot, click the X in top right of the window so that it does not reboot



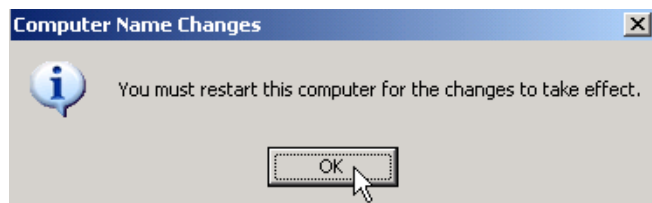
- On the Computer Name Tab, click the Change button.



- On the Computer Name Changes Window, change the Computer Name to USER00
 - 2 Zeroes, not o's
- Make sure the Workgroup is BSMGR
- Click OK



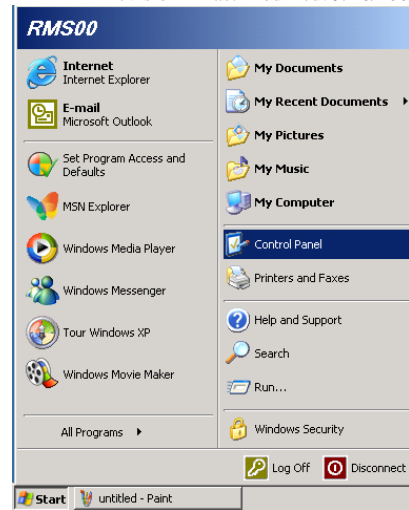
- When prompted to reboot, click OK to reboot



- After the computer reboots, log in as the RMS00 account

Setting up Local Security Policy

- Click Start and then click Control Panel



- If you have an option at the top left of the window that says, "Switch to Classic View", click it.

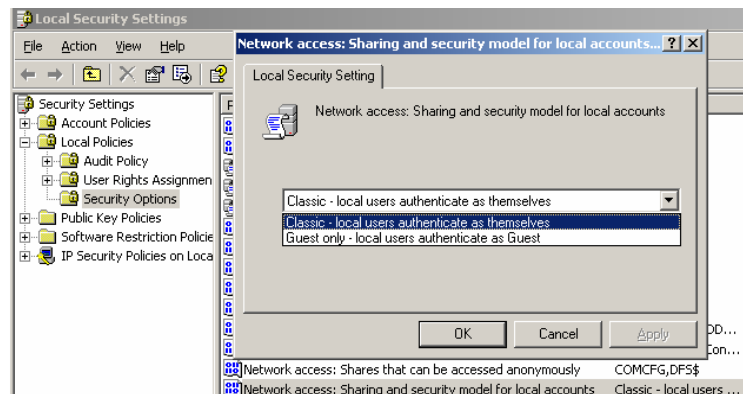


- Double Click Administrative Tools



- Double Click Local Security Policies

- In the left frame, click the plus sign next to Local Polices and then click Security Options. In the right Frame, locate Network Access: Sharing and Security Model for local accounts and double click it. Change this option to Classic – local users authenticate as themselves and then click OK.

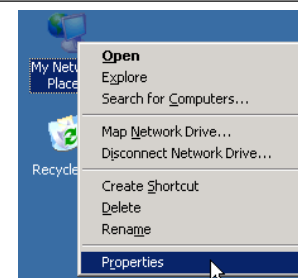


- Now locate the option Accounts: Limit local account use Of blank password to..... and Double click it. Change this to Disabled and click OK.
- Click the "X" in the top right of the window to close the "Local Security Settings" Window.

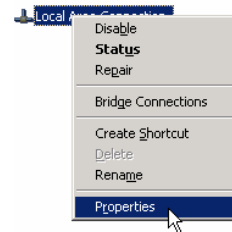


Network Settings

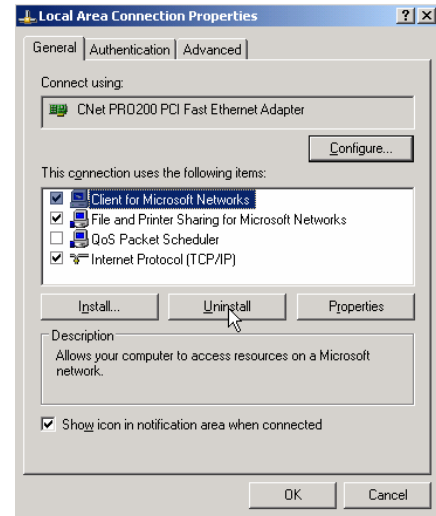
- Right click on My Network Places and click Properties



Right click on Local Area Connection and click Properties



- Make sure the network components to the right are installed and checked.
- Note: The network adapter, labeled CNET PRO200 PCI Fast Ethernet Adapter, will be replaced with the name of the network card that is installed in your server computer.



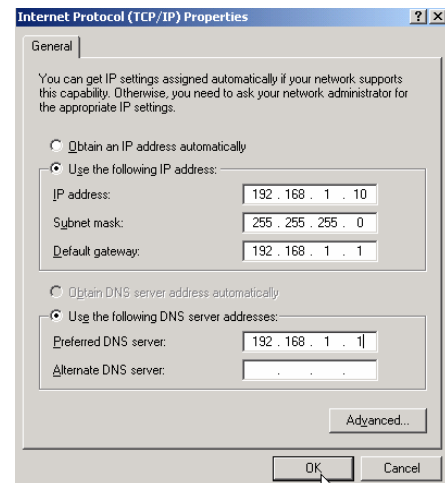
- Select TCP/IP and click Properties and fill in the required numbers.
- Enter an IP address for the server.
Note: Bookstore Manager recommends that you adhere to the following IP structure:
IP Address: 192.168.1.10
Subnet Mask: 255.255.255.0
Default Gateway: 192.168.1.1
Preferred DNS Server: 192.168.1.1
Alternate DNS Server should be Blank

NOTE 1 If you are installing Bookstore Manager on an existing network, please contact your network administrator for the proper IP configuration.

NOTE 2 If you don't have a router in your store, leave the "Default Gateway" and "Preferred DNS Server" lines blank

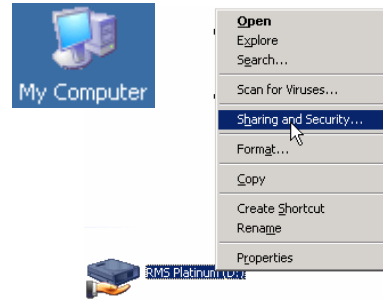
NOTE 3 If you have High Speed Internet, your DNS's may be different.

- Click OK

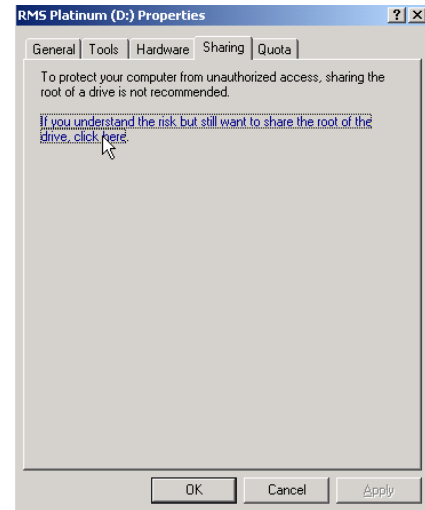


Sharing Network Drive and Printer

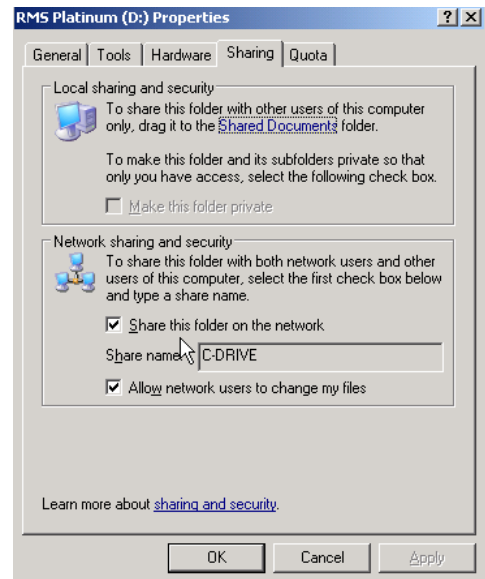
- Double click My Computer
- Right click on the drive that contains Bookstore Manager
- Click Sharing and Security...



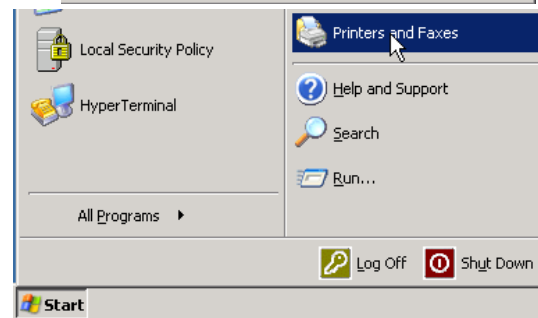
- Click the link that says, If you understand the risk but still want to share the root of the drive, click here. This will show the Sharing Properties.



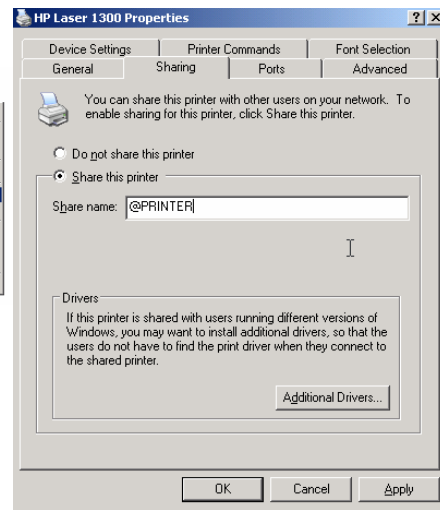
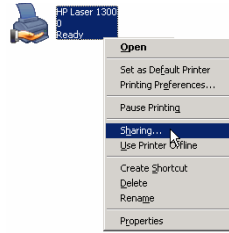
- Check the box that says, “Share this folder on the Network.” For the Share name: type: C-DRIVE
- Check the box that says Allow network users to Change my files. Then click OK.



- Click Start, then Printers and Faxes

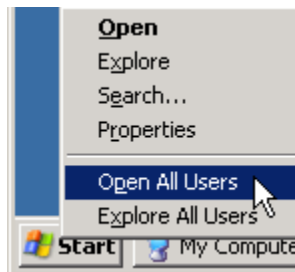


- Right click on the primary report printer (usually the one with the black checkmark)
- Click Sharing
- Click the dot next to Share this Printer
- Give it a Share name of @printer
- Click OK
- Click the “X” in the top right of the window to close the “Printers and Faxes” window.

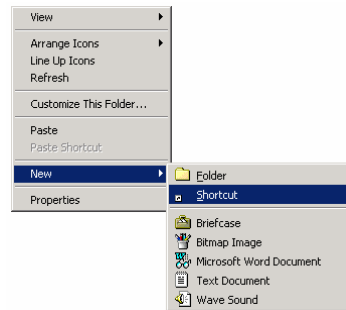


Setting up Shortcuts

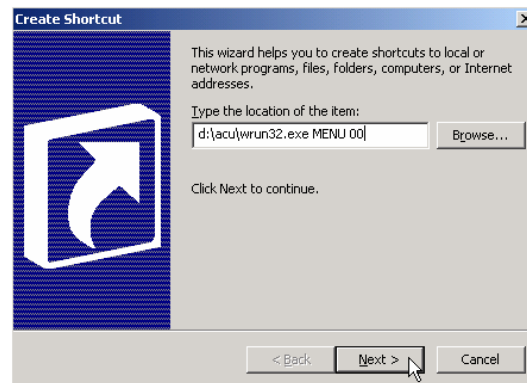
- Right click on the Start button
- Click Open All Users
- Double click Programs
- Double click Startup



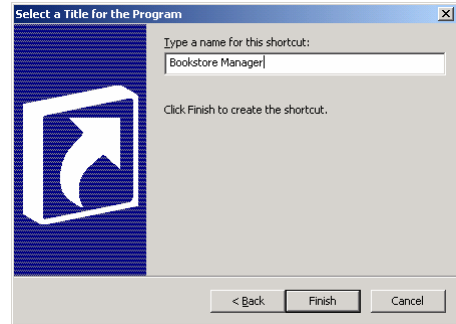
- Click on File, then New, then Shortcut



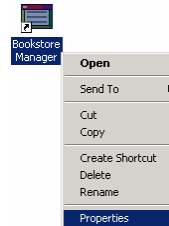
- Type: D:\ACU\WRUN32.EXE MENU 00 (where D is the drive letter of RMS)
 - The first number after “MENU” is the “USER_NUM”, the second number is the “REG_NUM”. If the server is also a point of sale, use 11 in place of 00 for point of sale #1.
- Click Next



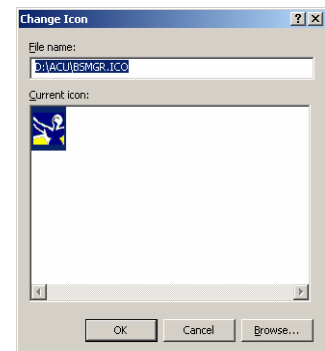
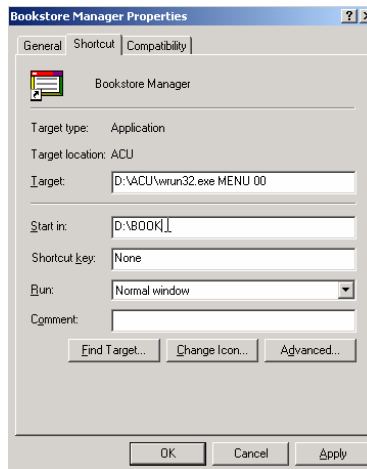
- Type: Bookstore Manager where it asks for a name
- Click Finish



- Right click on the newly created shortcut
- Click Properties



- Set the Start in to **D:\BOOK** (where D is the drive Bookstore Manager is installed on)
- Click Change Icon
- Type **D:\ACU\BSMGR.ICO** (where D is the drive Bookstore Manager is installed on)
- Click OK
- Click OK again



- Right click the newly created icon and click Send To, then click Desktop (create shortcut)
- Click the "X" in the top right of the window to close the "Startup" folder.
- When you go into BSMGR, you will get a dialog box that shows up the first time you run BSMGR indicating "Fast Mode" Click OK then click the BSMGR icon again to Start BSMGR. You will get a message that you need to run REGOCX
- To run REGOCX, in Bookstore Manager, click on Utilities and down to Operating System. Then at the DOS prompt, type: REGOCX <Enter> You will see several screens that should say, "DllRegisterServer in succeeded." Click OK on these.

