



Bookstore Manager

Technical Information Document

Windows XP PRO Setup for a POS/Workstation

Document Information:

Category	Hardware	O/S	Win XP Pro	Last Modified	10/20/05
Author	JA				

Document Summary

Instructions for setting up Windows XP PRO as a POS/Workstation for BSMGR.

Document Contents

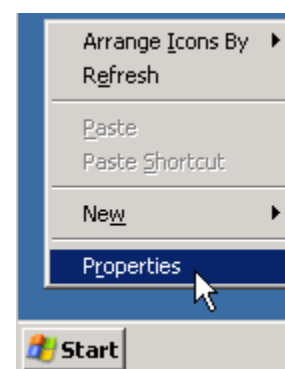
NOTE: These instructions must be followed after installing the BSMGR RMS CD's on the Network Server. Please log in as the Administrator account.

NOTE 2: If you have a TSP 143 receipt printer, you must have a default printer setup in Windows.

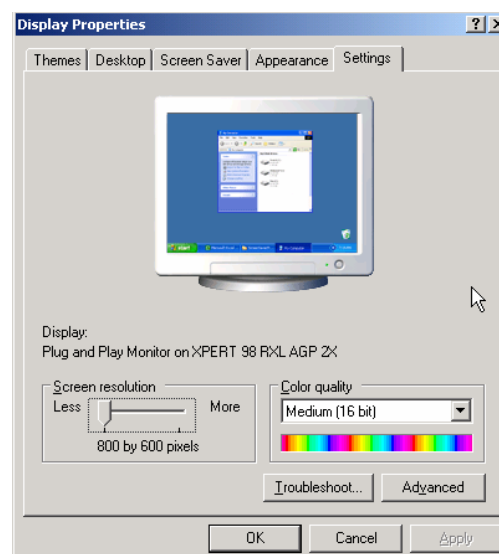
NOTE 3: If you have a TSP143 receipt printer and the Palm Desktop software loaded, the TSP 143 printer will not work.

Screen Size and Task Bar

- Right click on the desktop and click properties.



- Go to the Settings Tab and set the screen resolution to 800 X 600 and Colors to 16bit, click OK. Answer Yes to the question that comes up.

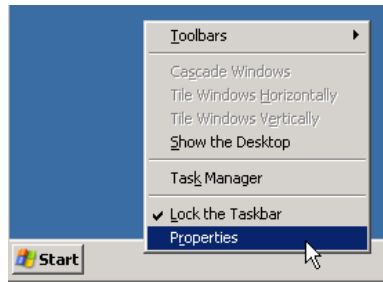


Bookstore Manager A head for your business. A heart for your ministry.

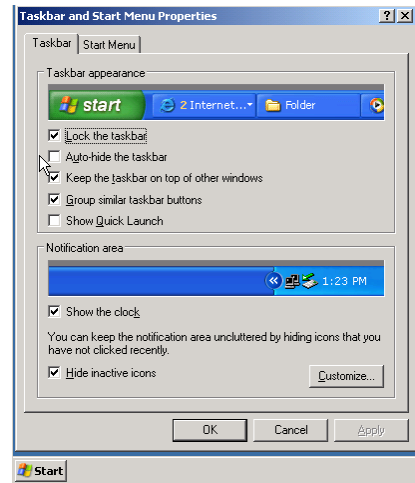
Bookstore Manager • 201 Fannin Street • Abilene, Texas • 79603
tel. 1-800-997-6724 • fax 325-673-0527 • www.bsmgr.com

Total Technology Solutions!

- Right click on the Task Bar and click Properties

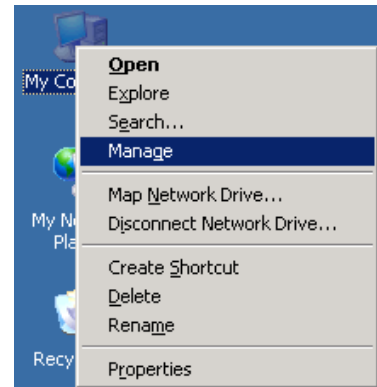


- Ensure that the check box that says Auto Hide is unchecked and click OK

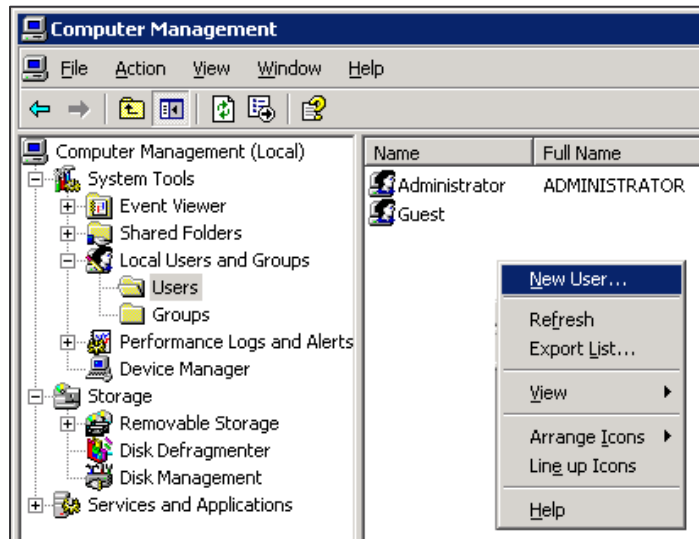


Creating USER Accounts

- Right click My Computer, then click Manage



- On the left hand side, click the minus sign next to Local Users and Groups
- Click the Users Folder
- In a blank area on the right hand side, Right click and choose New User...



- For User name, put RMS01
- For Full name, put RMS01
- For Description, put POS/Workstation
- Leave Password and Confirm Password blank
- Uncheck the box labeled, “User must change password at next logon”
- Check the box labeled, “User cannot change password”
- Check the box labeled, “Password never expires”
- Click the Create button
- Click the Close button

New User [?] [X]

User name: RMS01

Full name: RMS01

Description: POS/Workstation

Password: []

Confirm password: []

User must change password at next logon

User cannot change password

Password never expires

Account is disabled

[Create] [Close]

- You should now see the newly created RMS01 account listed.

- Double click on RMS01.
- Click the 2nd tab labeled, “Member Of”
- You should see the name Users listed under Member of:
- Click the Add... button

RMS01 Properties [?] [X]

General Member Of Profile

Member of:

Users

[Add...] [Remove]

[OK] [Cancel] [Apply]

- You will now see a Select Groups window.
- Under Enter the object names to select, type in the word: Administrators
- Click OK

Select Groups [?] [X]

Select this object type:

Groups [Object Types...]

From this location:

USER01 [Locations...]

Enter the object names to select (examples):

Administrators [Check Names]

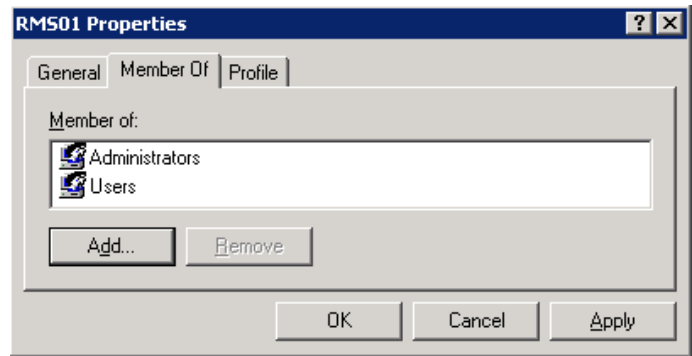
[Advanced...] [OK] [Cancel]

- You should now see both Administrators and Users under Member of:

- Click OK
- ***NOTE***

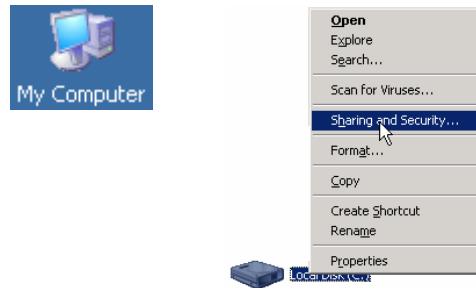
You will need to do the above steps for adding RMS01-RMS09. You will also need to create a USER09 account.

- Once you are finished adding users, you can click the X in the top right window to close Computer Management.

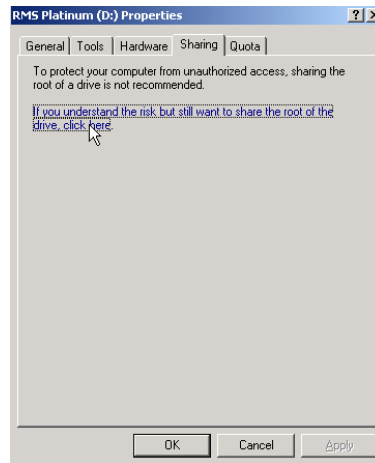


Sharing the POS drive

- Open My Computer
- Right Click on the C: and choose sharing



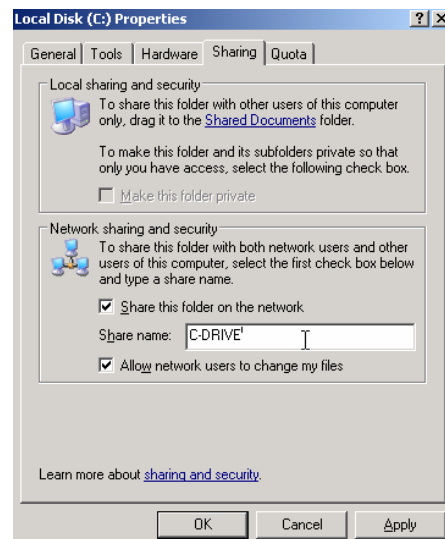
- Click the link that says, "If you understand the risk but still want to share the root of the drive, click here." This will show the Sharing Properties



- Check the box that says, "Share this folder on the Network." For the Share name: type: C-DRIVE
- Check the box that says Allow network users to Change my files. Then click OK.

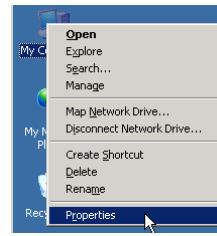
NOTE: This is shared so that you can do an archive back up from the server to this station using SCHEDULE.

- Click the "X" in the top right of the window to close "My Computer"

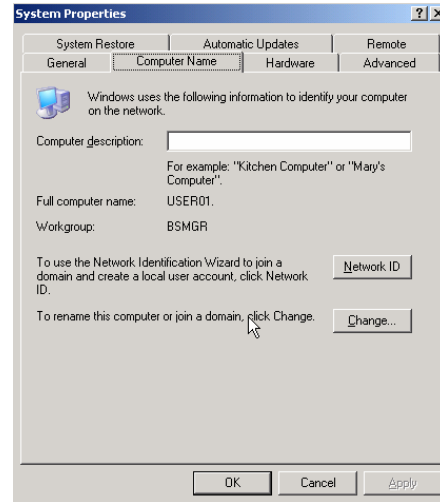


Windows XP Pro Network Environment Settings

- Right click on My Computer
- Click Properties



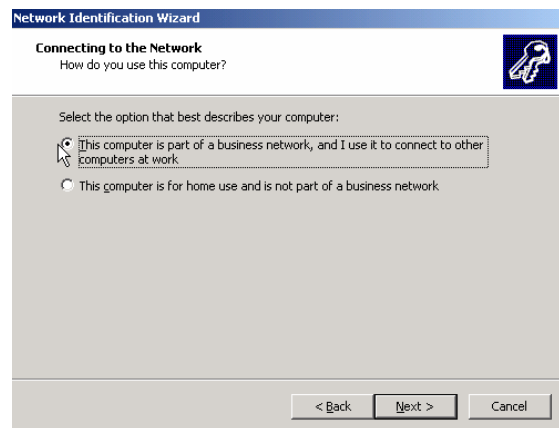
- Click the Computer Name Tab
- Click the Network ID button



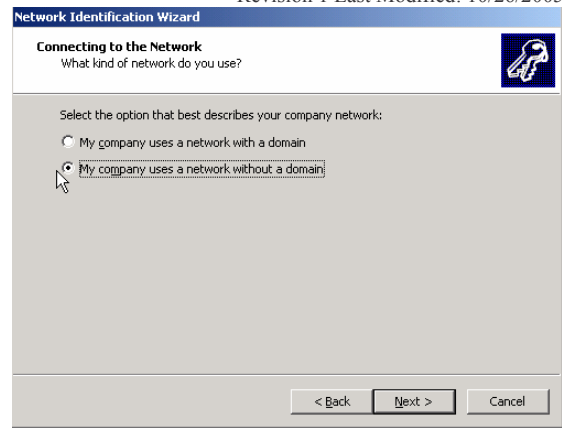
- At the, “Welcome to the Network Identification Wizard” Click Next.



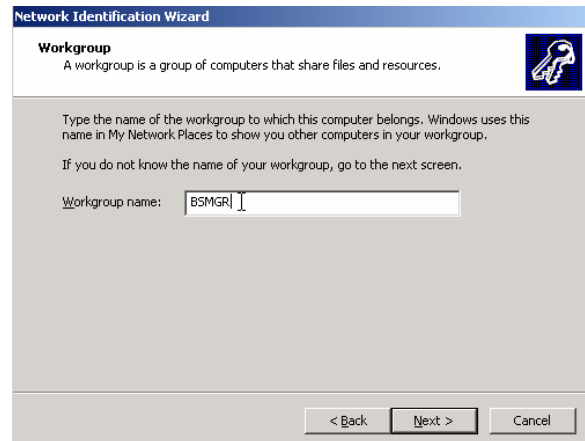
- Click the radio button: This computer is a part of a business network, and I use it to connect to the other computers at work and then click Next.



- Click the radio button: My computer uses a network without a domain and then click Next.



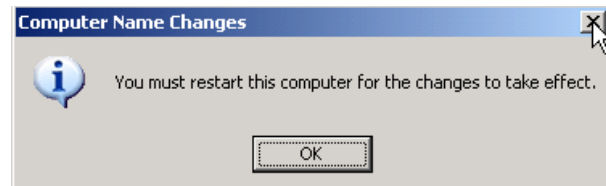
- Change the Workgroup to BSMGR
- Note: If you choose to use a different workgroup name, ALL computers in your store network, including Quest units, must have the same workgroup name.
- Click Next



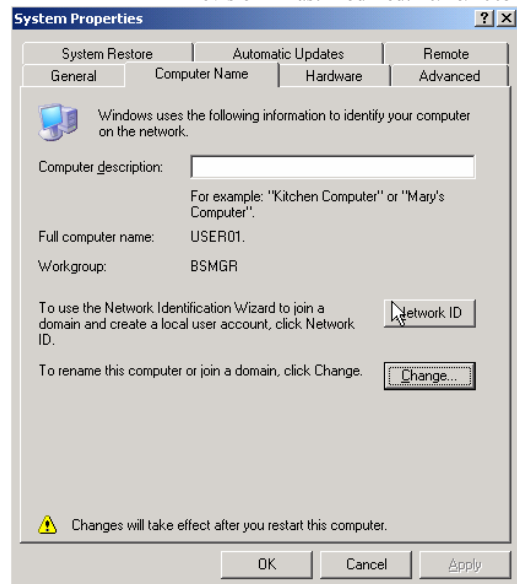
- At the Completing The Network Identification Wizard, click Finish



- If prompted to reboot, click the X in top right of the window so that it does not reboot

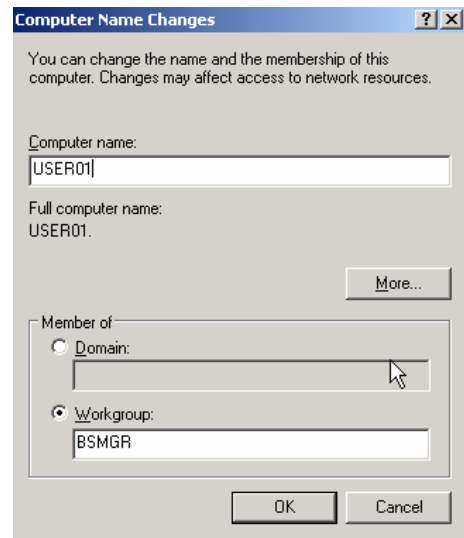


- On the Computer Name Tab, click the Change button.



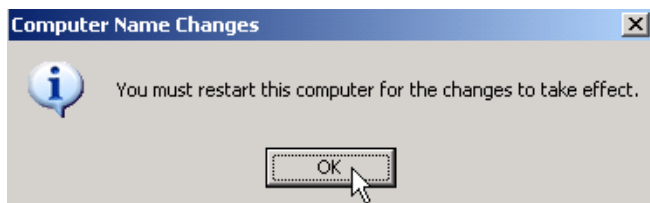
- On the Computer Name Changes Window, change the Computer Name to USER01
 - (zero one, not oL)
- Make sure the Workgroup is BSMGR
- Click OK

*****NOTE*** The computer name must be unique for each computer in the network. For POS/Workstation #2, set Computer Name to USER02. POS #3 should be USER03, POS #4 should be USER04, etc...**



When prompted to reboot, click OK to reboot

- After the computer reboots, log in as the RMS01 account



Setting up Local Security Policy

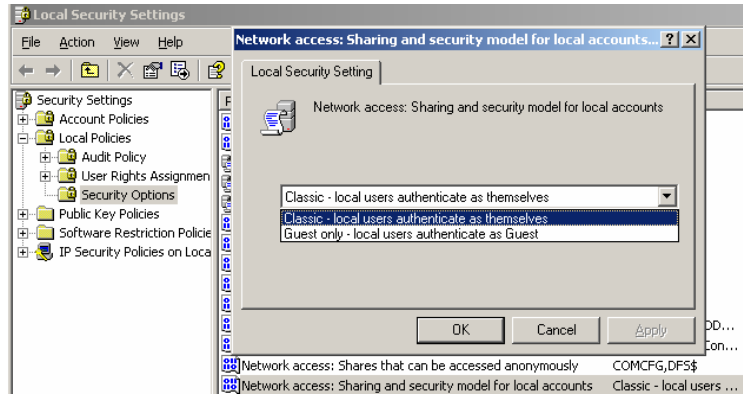
- Click Start and then click Control Panel



- Double Click Administrative Tools
- Double Click Local Security Policies



- In the left frame, click the plus sign next to Local Polices and then click Security Options. In the right Frame, locate Network Access: Sharing and Security Model for local accounts and double click it. Change this option to Classic – local users authenticate as themselves and then click OK.

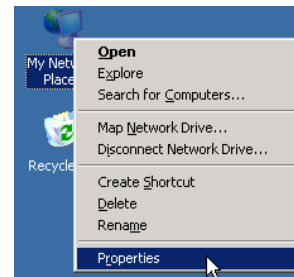


- Now locate the option Accounts: Limit local account use Of blank password to..... and Double click it. Change this to Disabled and click OK.
- Click the “X” in the top right of the window to close the “Local Security Settings” Window.

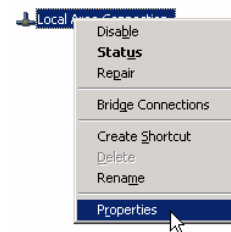


Network Settings

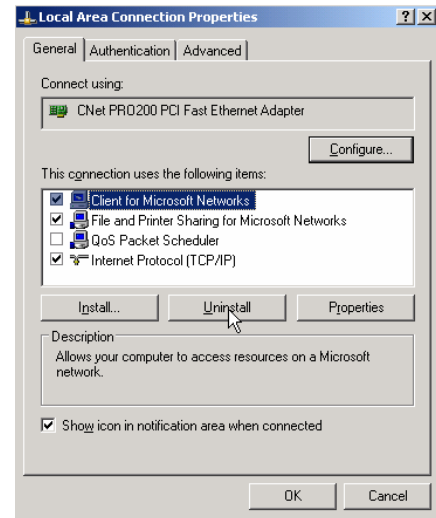
- Right click on My Network Places and click Properties



- Right click on Local Area Connection and click Properties



- Make sure the network components to the right are installed and checked.
- Note: The network adapter, labeled CNET PRO200 PCI Fast Ethernet Adapter, will be replaced with the name of the network card that is installed in your server computer.



- Select TCP/IP and click Properties and fill in the required numbers.
- Enter an IP address for the server.

Note: Bookstore Manager recommends that you adhere to the following IP structure:

IP Address: 192.168.1.11

Subnet Mask: 255.255.255.0

Default Gateway: 192.168.1.1

Preferred DNS Server: 192.168.1.1

Alternate DNS Server should be Blank

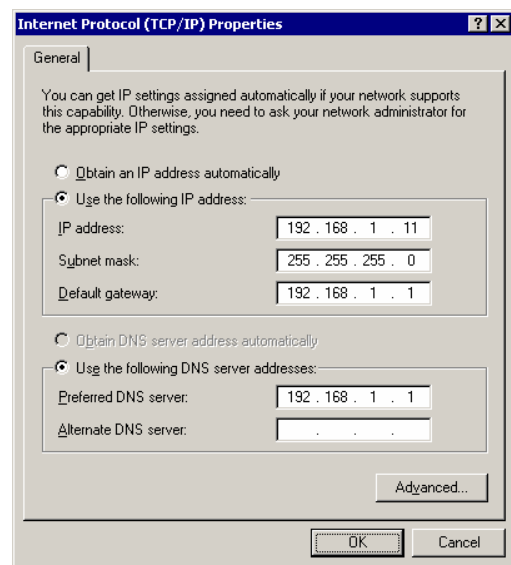
NOTE 1: Increment the IP address for each computer you add to the network, but leave the other numbers the same. The second POS will have an IP address of 192.168.1.12. A third POS will have 192.168.1.13 and so on.

NOTE 2: If you are installing Bookstore Manager on an existing network, please contact your network administrator for the proper IP configuration.

NOTE 3: If you don't have a router in your store, leave the "Default Gateway" and "Preferred DNS Server" lines blank

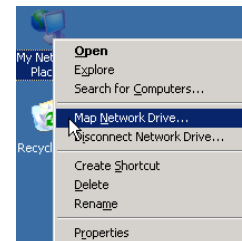
NOTE 4: If you have High Speed Internet, your DNS's may be different.

- Click OK

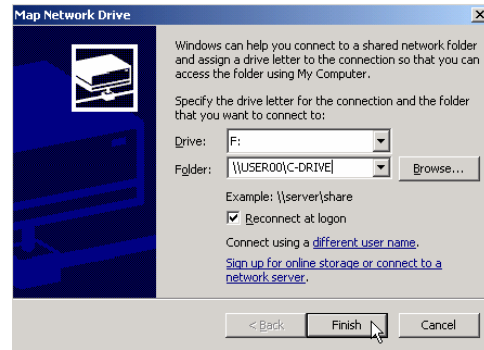


Mapping a Network Drive

- Right click My Network Places
- Click Map Network Drive...

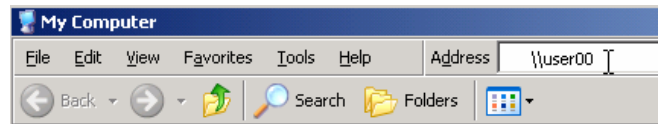


- For Drive, select Y:
- For Folder, type: \\USER00\C-DRIVE
- Click Finish
- Once it brings up the window, just close it.

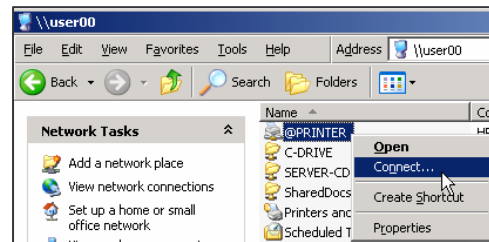


Installing the Printer

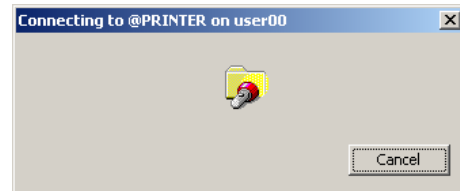
- Open My Computer.
- For Address, type: \\USER00 <Enter>



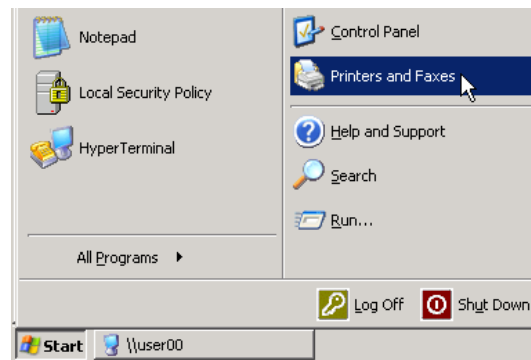
- Right Click on @PRINTER and click Connect...



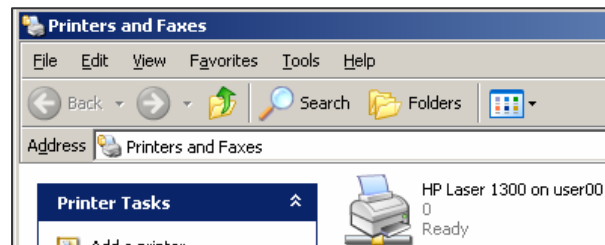
- You will see it connecting to the printer.



- Click Start, then Printers and Faxes

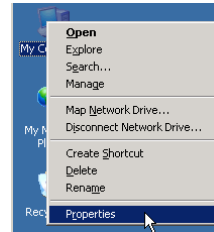


- You should now see the installed printer. It should say <Printer Name> on user00
- Click the “X” in the top right of the window to close the “Printers and Faxes” window.

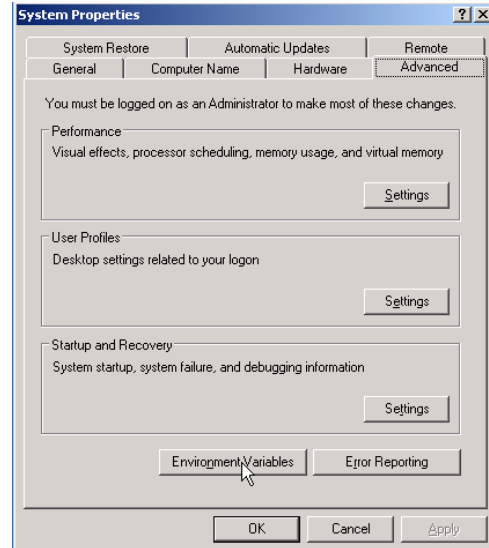


Windows XP Pro Environment Settings

- Right click on My Computer
- Click Properties



- Click the Advanced Tab
- Click the Environment Variables button

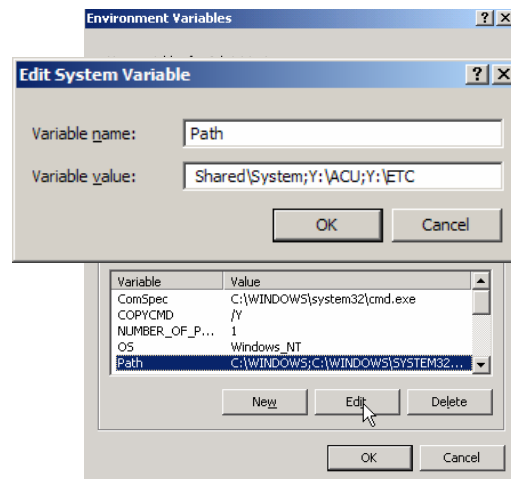


- Select PATH in the System Variables
- Click the Edit button
- Go to the end of the Variable Value field and type:

;Y:\ACU;Y\ETC

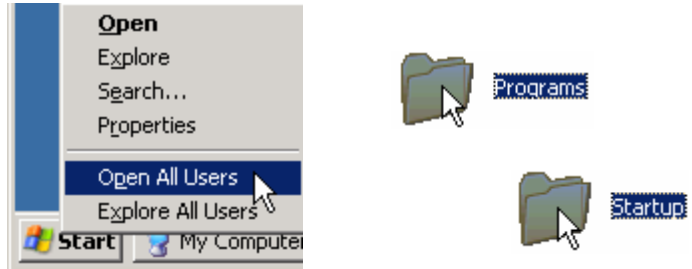
Note: Replace F with the drive letter that RMS is installed on

- Click OK
- Click OK

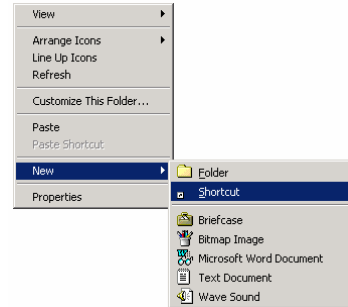


Setting up Shortcuts

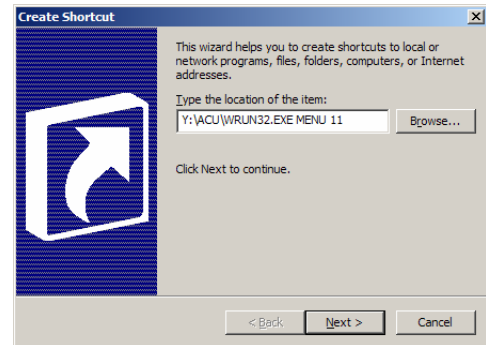
- Right click on the Start button
- Click Open All Users
- Double click Programs
- Double click Startup



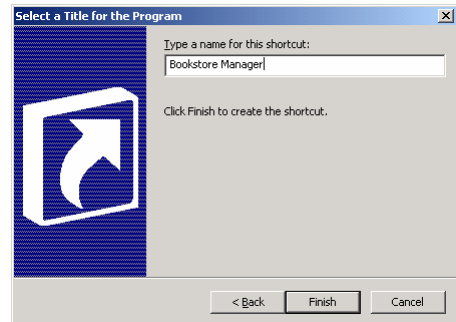
- Click on File, then New, then Shortcut



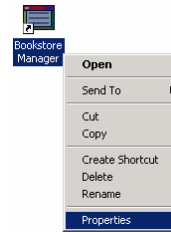
- Type: Y:\ACU\WRUN32.EXE MENU 11 (where Y is the drive letter of RMS)
 - The first number after “MENU” is the “USER_NUM”, the second number is the “REG_NUM”. For POS #2, use 22. For POS #3, use 33 and so on.
- Click Next



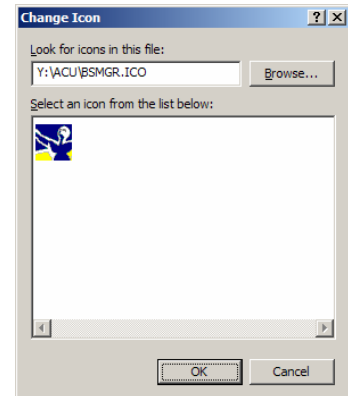
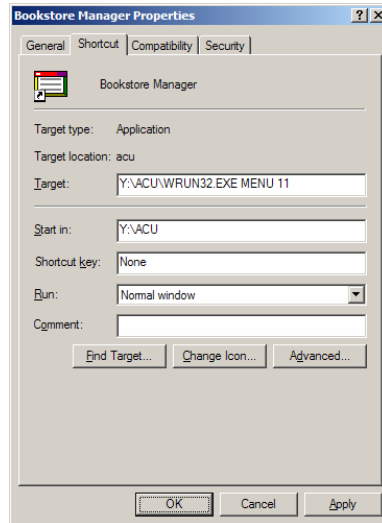
- Type: Bookstore Manager where it asks for a name
- Click Finish



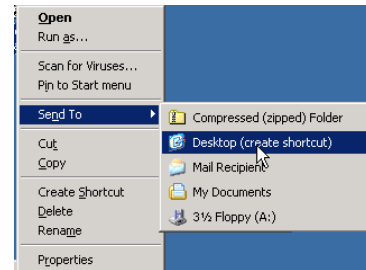
- Right click on the newly created shortcut
- Click Properties



- Set the Start in to **Y:\BOOK** (where Y is the drive Bookstore Manager is installed on)
- Click Change Icon
- Type Y:\ACU\BSMGR.ICO (where Y is the drive Bookstore Manager is installed on)
- Click OK
- Click OK again



- Right click the newly created icon and click Send To, then click Desktop (create shortcut)
- Click the "X" in the top right of the window to close the "Startup" folder.



- When you go into BSMGR, you will get a dialog box that shows up the first time you run BSMGR indicating "Fast Mode" Click OK then click the BSMGR icon again to Start BSMGR. You will get a message that you need to run REGOCX
- To run REGOCX, in Bookstore Manager, click on Utilities and down to Operating System. Then at the DOS prompt, type: REGOCX <Enter> You will see several screens that should say, "DllRegisterServer in succeeded." Click OK on these.

