



Bookstore Manager

Technical Information Document

Reinstalling a Modem in Windows 2000/XP

Document Information:

Category	Software	O/S	Win2000/XP	Last Modified	9/26/03
Author	JA				

Document Summary

Setting up and configuring a modem on Windows 2000/XP

Document Contents

[Deleting a modem](#)

[Adding a modem](#)

[Setting up the modem in BSMGR](#)

Deleting a modem

1. Click Start, Settings, Control Panel.

NOTE: If you are using Windows XP, the Control Panel may be in "Category View." If this is the case, you will need to click the link in the top left of the window that says, "Switch to Classic View."

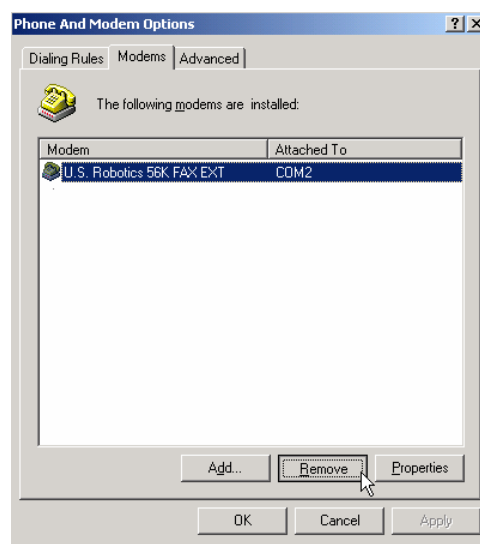
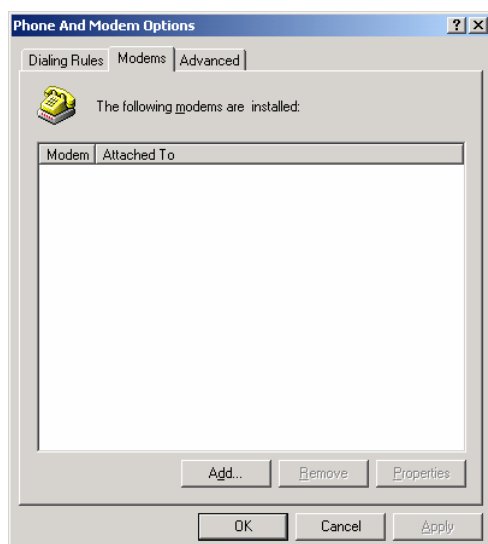
2. Double click Phone and Modem Options.

3. Click on the Modems Tab.

4. Select the Modem in the list and choose Remove.



Phone and Modem Options



Bookstore Manager A head for your business. A heart for your ministry.

Bookstore Manager • 201 Fannin Street • Abilene, Texas • 79603
tel. 1-800-997-6724 • fax 325-673-0527 • www.bsmgr.com

Total Technology Solutions!

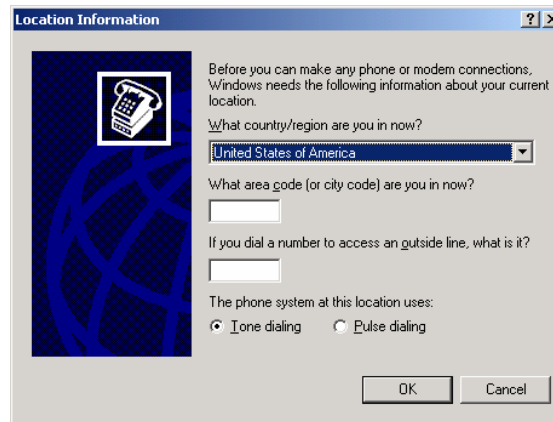
Adding a Modem

1. Click on Start, Settings, Control Panel.

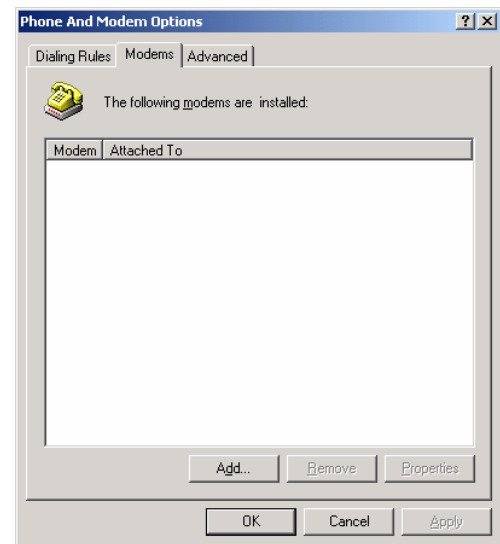
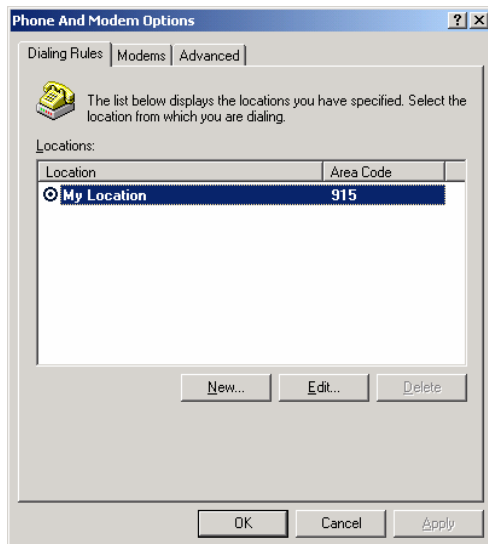
NOTE: If you are using Windows XP, the Control Panel may be in “Category View.” If this is the case, you will need to click the link in the top left of the window that says, “Switch to Classic View.”

2. Double click on Phone and Modem Options.

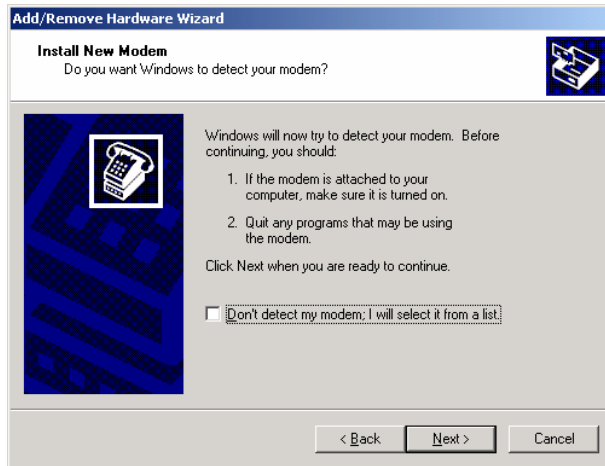
3. If this is the first time a modem is being setup you may receive the following screen.



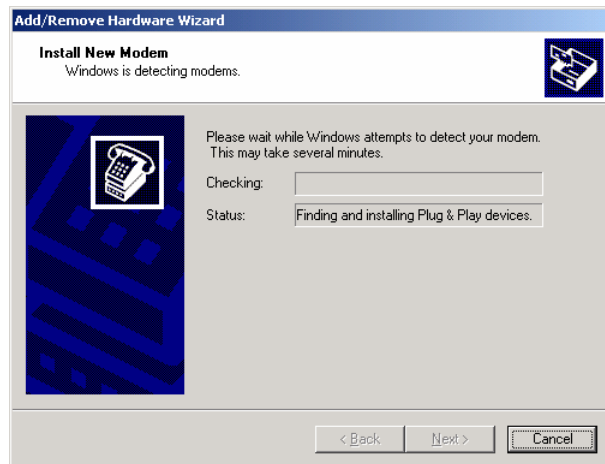
4. Enter in their area code and whether or not they need to dial a number to obtain an outside line.
5. Once you have done this press OK. This will bring you to the first Modem Options Screen.
6. Choose the Modems tab at the top of the screen, then click the Add button.



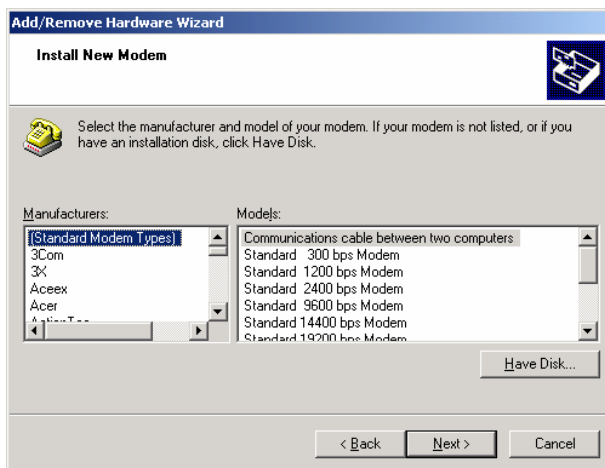
7. This starts the Add/Remove Hardware Wizard for the modem.



8. Click Next



9. It will then query all com ports in search of a new modem. If no modem is found, it will ask you to select from a list.



10. Find the manufacture and model and choose next.

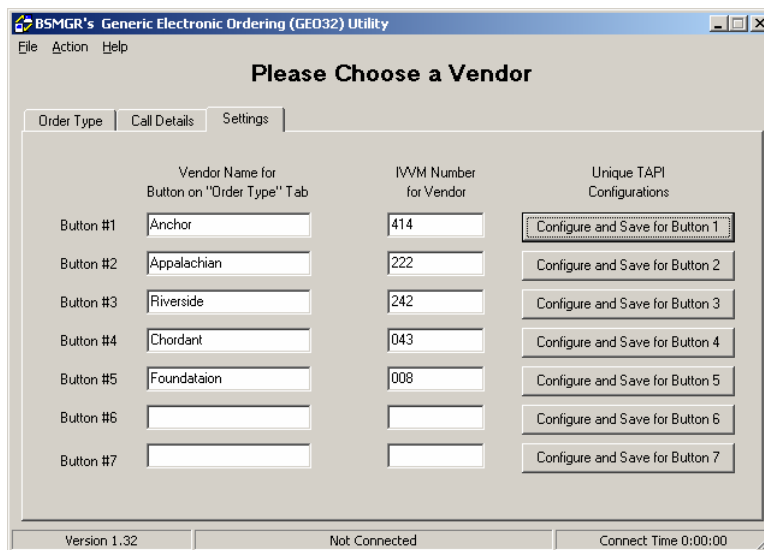
NOTE: If you have a disk from your modem manufacture, click the Have Disk... button, and then follow the onscreen wizard.

11. Once the drive is installed, it will ask you to choose finish to continue the process of installing the driver.

Setting up the Modems in Bookstore Manager

-EO-

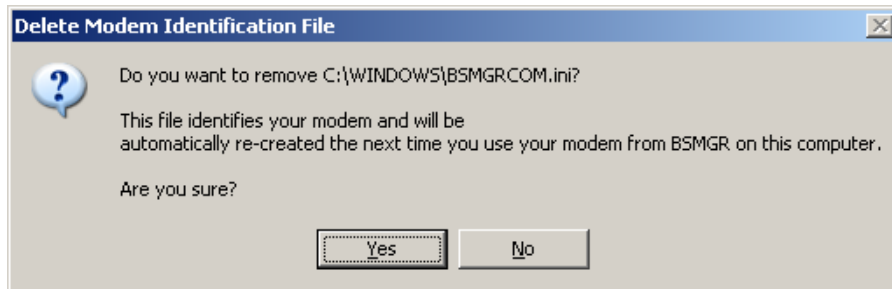
1. In BSMGR you will find Configure and Save buttons for all Win32 Comm apps. You will need to configure your modems for the following: Stock Checks, EO Programs, and MAPP Credit Cards.
2. Go into COMM at Enter Program Name. You will need to go into Generic EO and Ingram EO to reconfigure your modem. This document shows you the settings for GEO32. The only difference between GEO32 and INGRAM32 is that in INGRAM, you will click File then Settings. Click the Settings tab in GEO32.



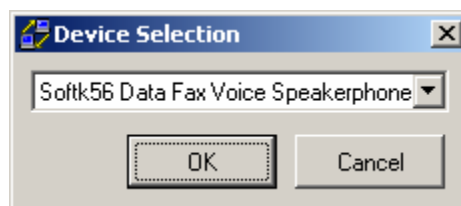
3. First you will need to click File on the menu bar, and click on Use Windows Dialing Properties if it is checked. Then click Action and click Clear Registry Settings. Then Click Action again and click Delete BSMGR.COM.INI.



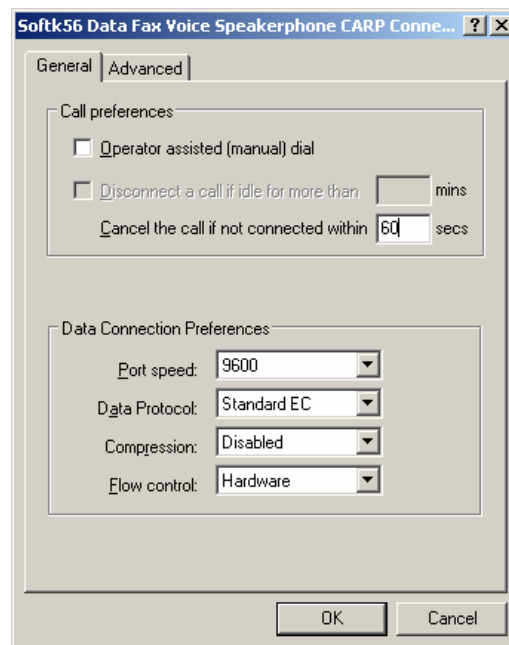
- When you click Delete BSMGR.COM.INI, you will see the following message, click Yes



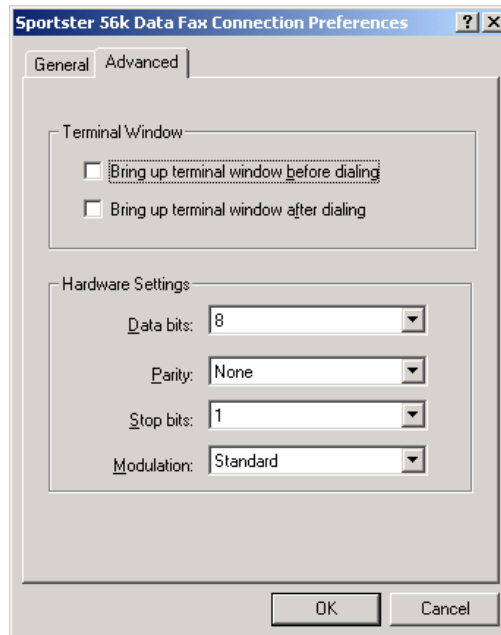
- Exit out of GEO32 and then go back into COMM. When you click Generic Electronic Ordering, you will be prompted for your modem. Select the modem you just installed from the drop down box and then click OK. After choosing your modem, click the Settings tab.



- Choose "Configure and Save for Button??" You will need to do this for each vendor you order from. Port Speed should be 9600. Data Protocol should be Standard EC, Compression should be Disabled, and Flow Control should be Hardware.

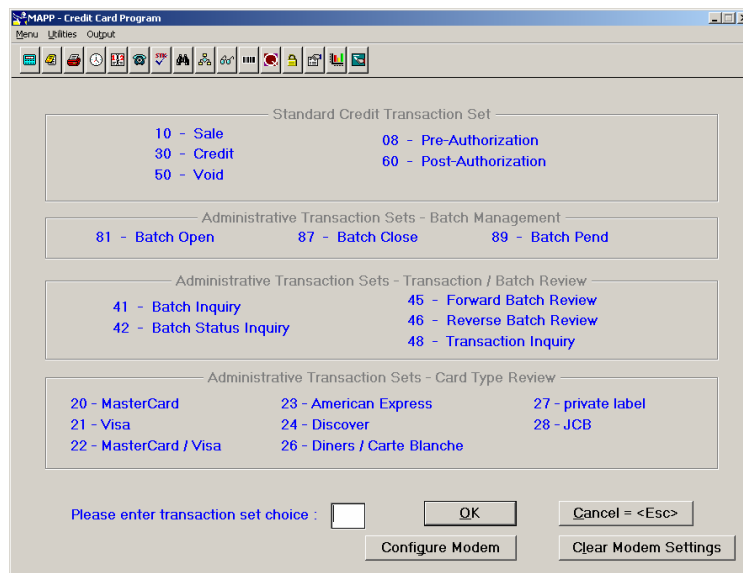


10. Click the Advanced tab. Set Data Bits to 8, Parity to None, Stop bits to 1, and Modulation to Standard. Click OK. You can now exit GEO32.

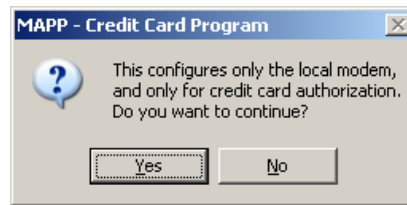


-MAPP Credit Cards (If you use our MAPP Credit Card Software)-

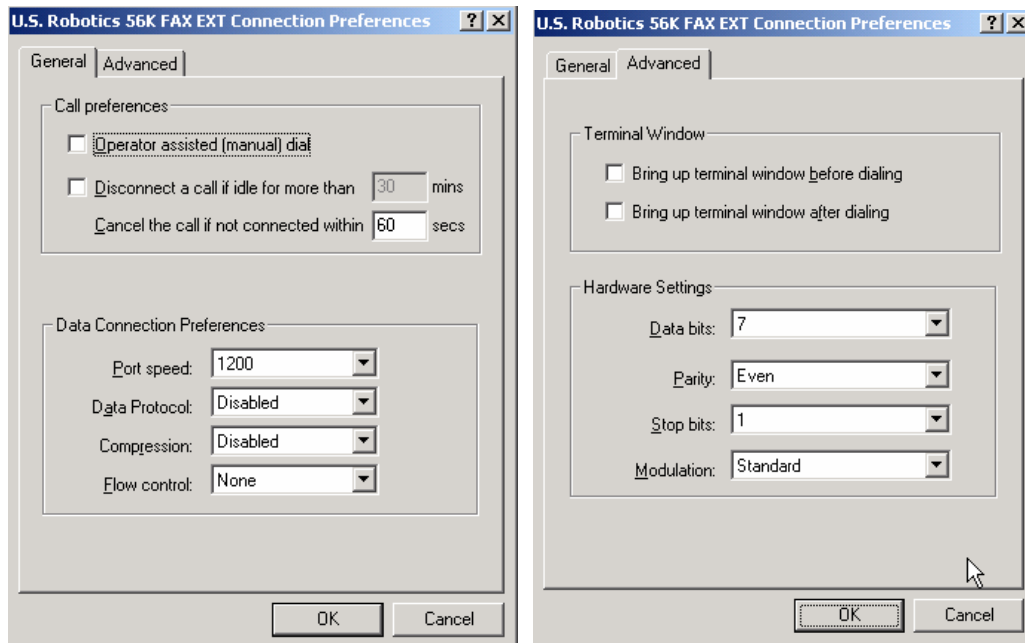
11. Go into MAPP at Enter Program Name



12. Click Configure Modem. Click Yes when asked to configure the modem.



13. On the General Tab, Set Port speed to 1200, Data Protocol to Disable, Compression to Disabled, and Flow Control to Hardware. Click Advanced. Change Data Bits to 7, Parity to Even, and Stop Bits to 1. Now click OK.



14. Enter 41 for Transaction Set Choice and choose OK, then Start. When it brings up MAPP32, click Action then Disconnect. Click File and then uncheck Windows Dialing Properties. Click File and Exit. You will get the following window. Click OK. Exit out of MAPP.

