



Bookstore Manager

Technical Information Document

Setting up a PD3000 Price Display Pole in Win2000/XP

Document Information:

Category	Software	O/S	Win2000/XP	Last Modified	9/26/2003
Author	JA				

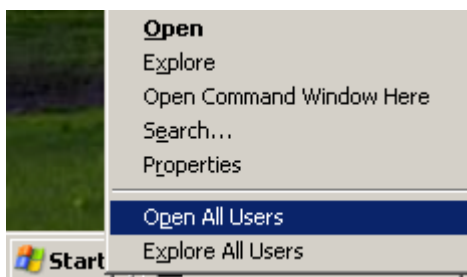
Document Summary

Instructions to setting up a PD3000 Price Display Pole

Document Contents

You will need to be at the station were the Price Display Pole is installed.

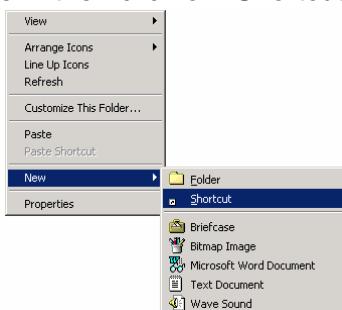
1. Right click the “Start” button on the task bar then click “Open All Users” on the popup options window.



2. In the “Start Menu” window double click on the “Programs” folder. Then double click the Startup Folder.



3. Click File, then highlight “New” then click on “Shortcut”.

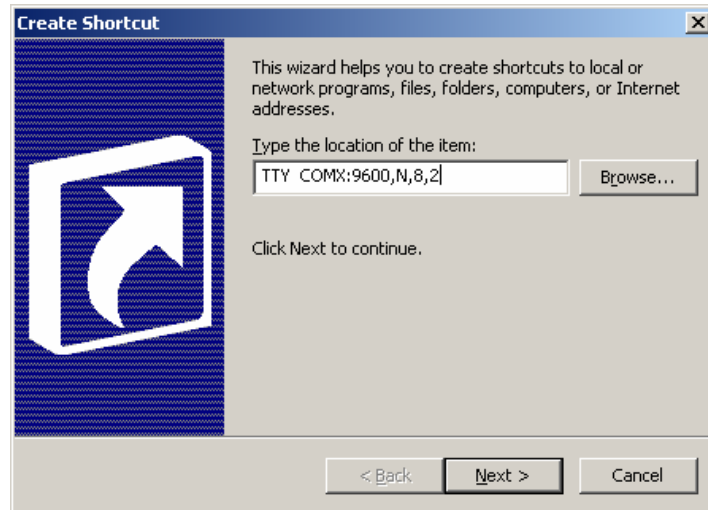


Bookstore Manager A head for your business. A heart for your ministry.

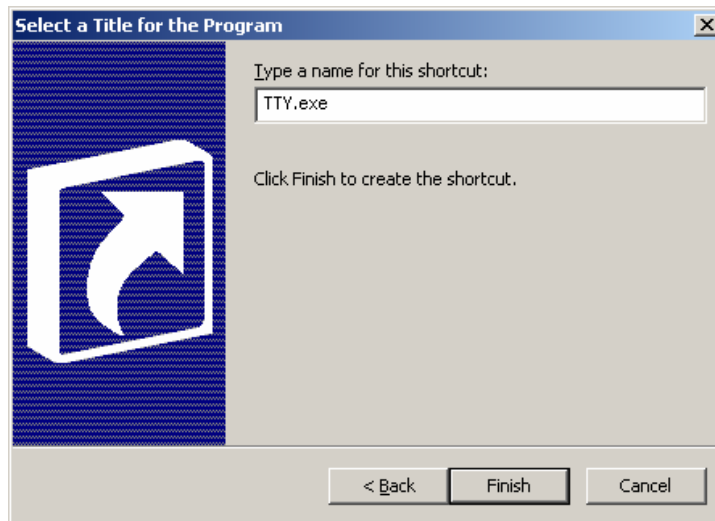
Bookstore Manager • 201 Fannin Street • Abilene, Texas • 79603
tel. 1-800-997-6724 • fax 325-673-0527 • www.bsmgr.com

Total Technology Solutions!

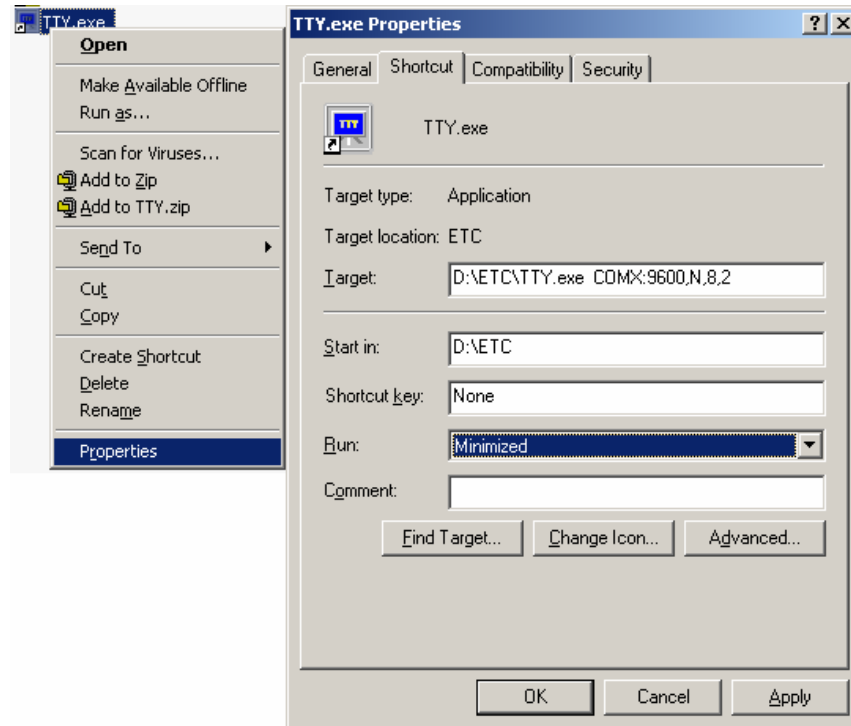
4. At the command line prompt on the “Create Shortcut” window type:
TTY COMx:9600,N,8,2 (Where **x** = **the com port** with the price display pole attached.)



5. Click the “Next” button on the “Create Shortcut” window. You can leave the name at TTY.EXE and then click Finish



- Right click the new TTY icon in the "StartUp" window and click on "Properties". Next click the "Shortcut" tab in the "Properties" window.



- Click the down arrow on the end of the "Run" entry field and then click "Minimized". Next click the OK button at the bottom of the "Properties" window (*Pictured Above*)
- Double click the TTY icon in the "StartUp" window. The program should show briefly on the "Start" task bar.



- Click the 'X' in the upper right corner of the "StartUp", "Programs" and "Start Menu" windows to close these windows.
- At Enter Program Name in BSMGR, type ENV. Add the following line:
LPOLE -D COMx
 (Where **x = the com port** with the price display pole attached.)
- Exit BSMGR and go back into BSMGR and now in POS, the Price Display Pole should be working.