



Bookstore Manager

Technical Information Document

Loading Updates on Quest from RMS Server

Document Information:

Category	Software	O/S	WinX	Last Modified	02/25/04
Author	JA - SP				

Document Summary

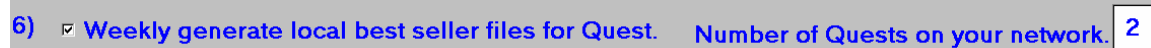
Instructions on loading Quest updates from the RMS Server

Document Contents

Monthly/Mid-Month Update Process

1. If you are using RMS Gold/Platinum on a Windows-based network, you can simplify the update process by configuring your BSMGR System to update all of your networked Quests after updating RMS.
2. Your first Quest must be named QUEST00 with a share name of C-DRIVE. (\\QUEST00\C-DRIVE)
3. Your second Quest must be named QUEST01 with a share name of C-DRIVE (\\QUEST01\C-DRIVE)
4. Your third Quest must be named QUEST02 with a share name of C-DRIVE (\\QUEST02\C-DRIVE), etc.
5. In RMS, at Enter Program Name, go into SCHEDULE.
6. On the Inventory tab, check #6 "Weekly generate local best seller files for Quest. (See Figure 1 below)
7. Enter the number of Quest units you have in the box "Number of Quests on your network". We will use 2 in our example. (See Figure 1 below)

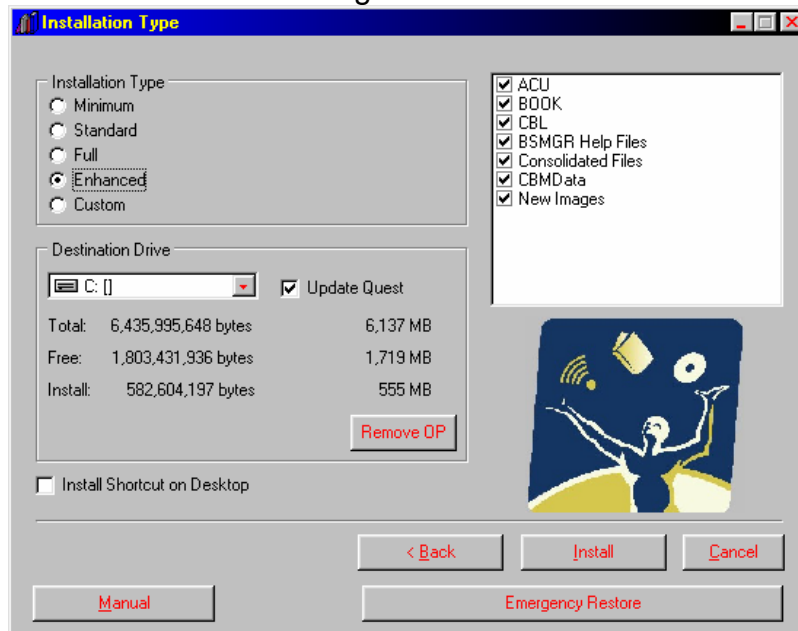
Figure 1



How to Update Quest using BSMGR's SETUP program

1. Exit all Quest units to the Windows desktop.
2. Insert update CD on the Network Server.
3. Choose Next at the Welcome Screen
4. At this screen, choose your install type. To the right of Destination letter, check the box that says Update Quest and choose Install. See Figure 2 below. This should update your networked Quest(s).

Figure 2



- If you had 2 Quest and only one was networked, you would need to make the Quest that is networked QUEST00. The networked Quest would get updated when you ran your update on the server assuming the correct options were selected, but the one that wasn't networked would still need to be updated manually. You would need to change SCHEDULE to Number of Quest = 1 since you are only updating 1 Quest over the network.