



**Bookstore
Manager**

Bookstore Manager

Technical Information Document

Setting up a USB PD3000 Light Pole in WinXP

Document Information:

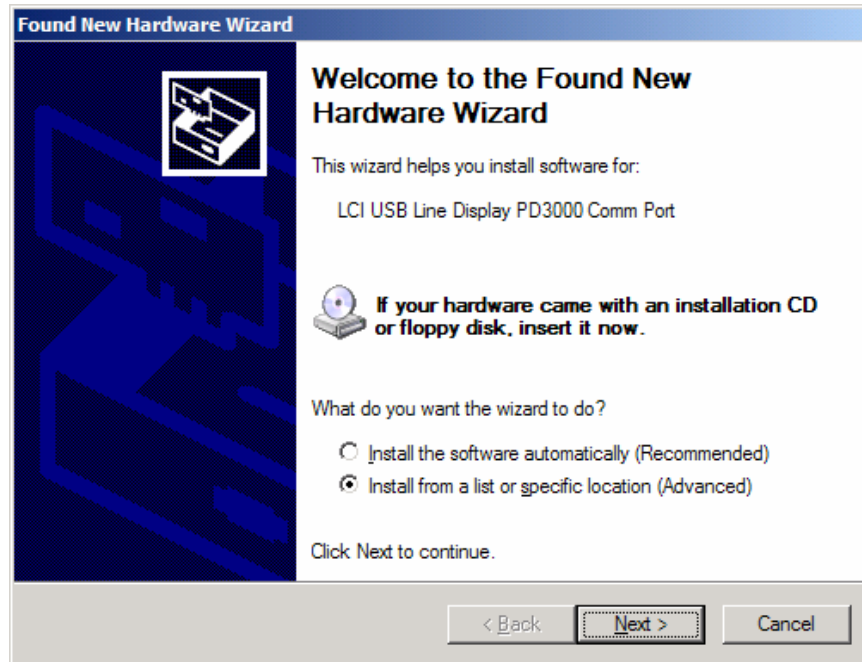
Category	Software	O/S	WinXP	Last Modified	09/30/05
Author	JA				

Document Summary

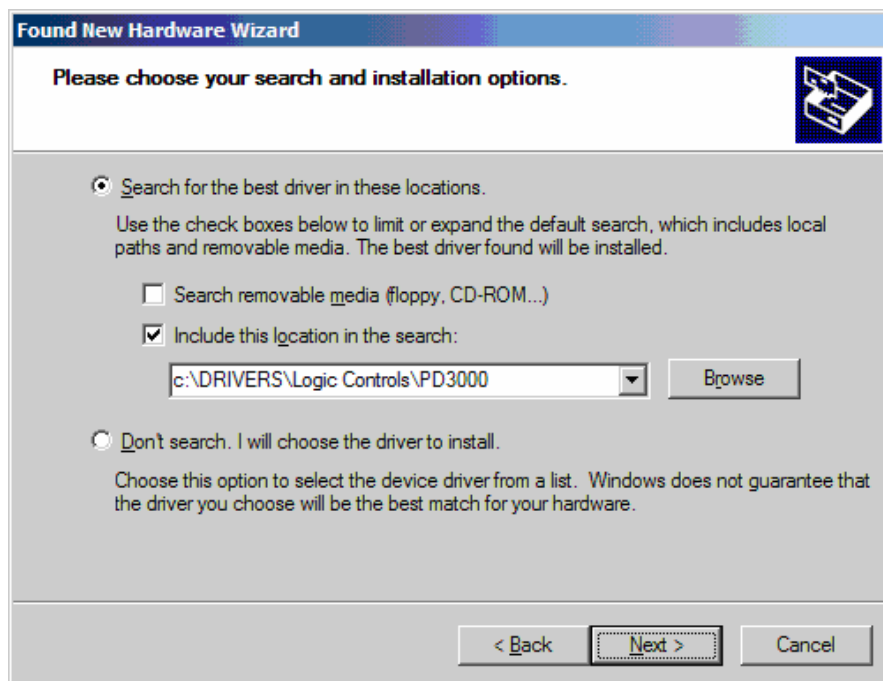
Instructions on setting up a USB PD3000 Light Pole.

Document Contents

1. Go to www.bsmgr.com. Go to the Support Page. Go to Downloads. Do a search for PD3000XP.EXE. Once you see the file, click on the name.
2. Click Open to open immediately or you can click Save to save it on your computer.
3. Once download completes, click Run or if you saved it to your computer, locate the file and double click it.
4. This is a self extracting zip file. Click the Unzip button. This will extract the file to C:\DRIVERS\Logic Controls\PD3000\.
5. Plug your PD3000 into an available USB Port.

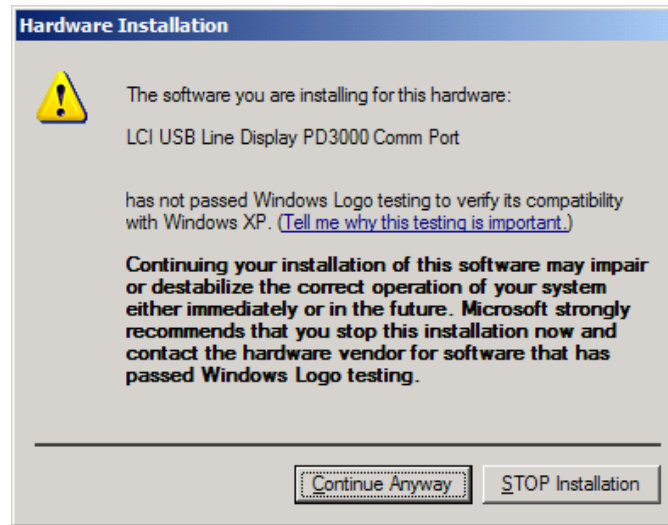


6. You should see a window that says "Welcome to the Found New Hardware Wizard". Select the second option labeled "Install from a list or specific location (Advanced)" and click Next.

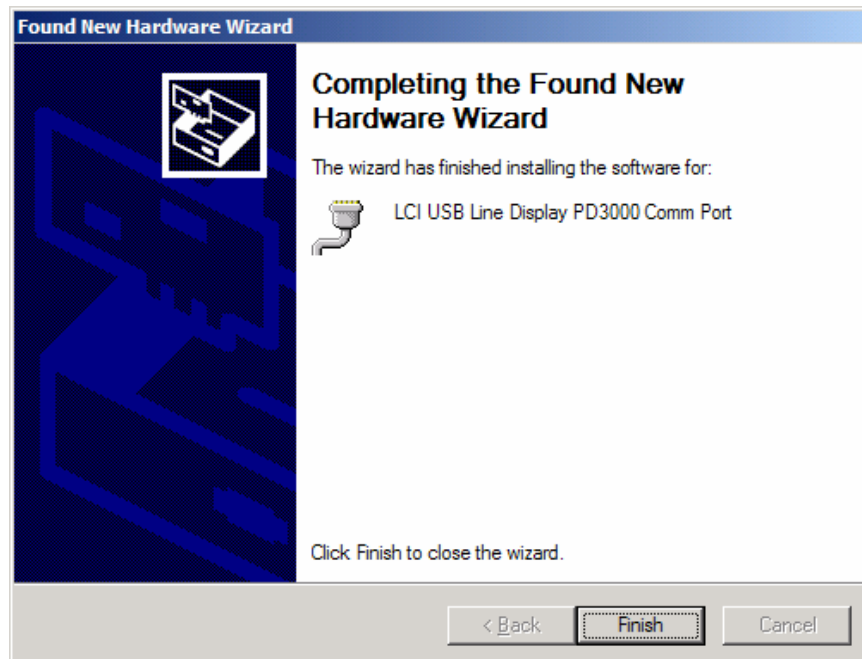


7. Select the option "Search for the best driver in these locations". Only check the box labeled "Include the location in the search:". In the entry field, type: C:\DRIVERS\Logic Controls\PD3000
8. Click Next

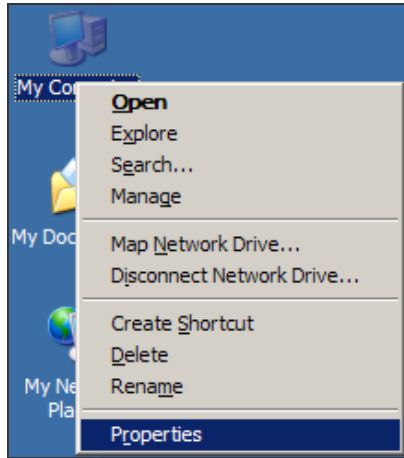
9. This should start the Installation.



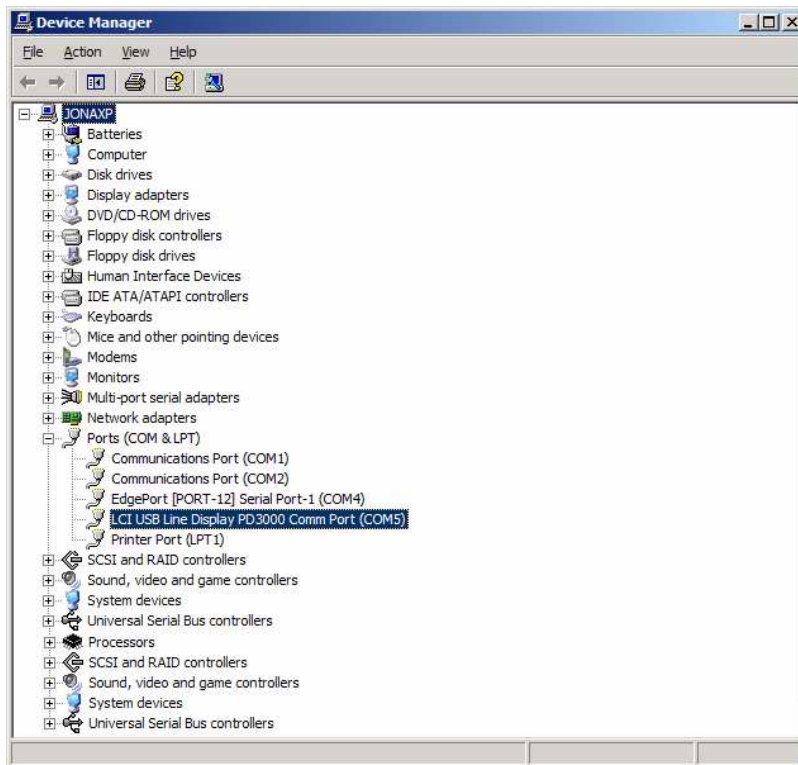
10. Click "Continue Anyway"



11. Click Finish



12. Go to the desktop. Right Click on My Computer and click Properties.



13. Click on the Hardware Tab. Then click on the button “Device Manager” on the left side of the window. Click on “LCI USB Line Display PD3000 Comm Port (COM?)”. Look to see what COM port # it is using. Now you can close Computer Management.

14. Go into BSMGR. At Enter Program Name, type ENV.

15. Click Add Entry. Add the following line to ENV

LPOLE -D COMX

(Where X = the com port that you found in device manager.)