



# Bookstore Manager

## Technical Information Document

### LogoEZ for Axiohm Printers

#### Document Information:

Category	Hardware	O/S	WinX	Last Modified	02/27/04
Author	JA - SP				

#### Document Summary

Instructions on how to use LogoEZ.

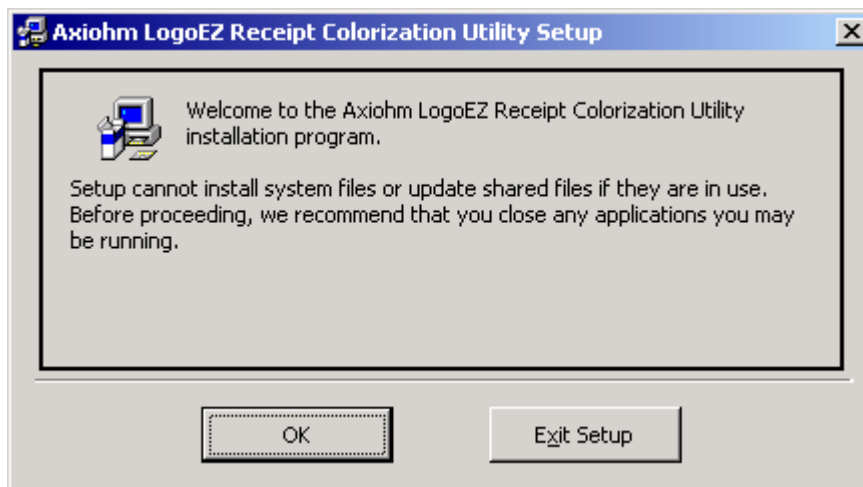
#### Document Contents

##### NOTES

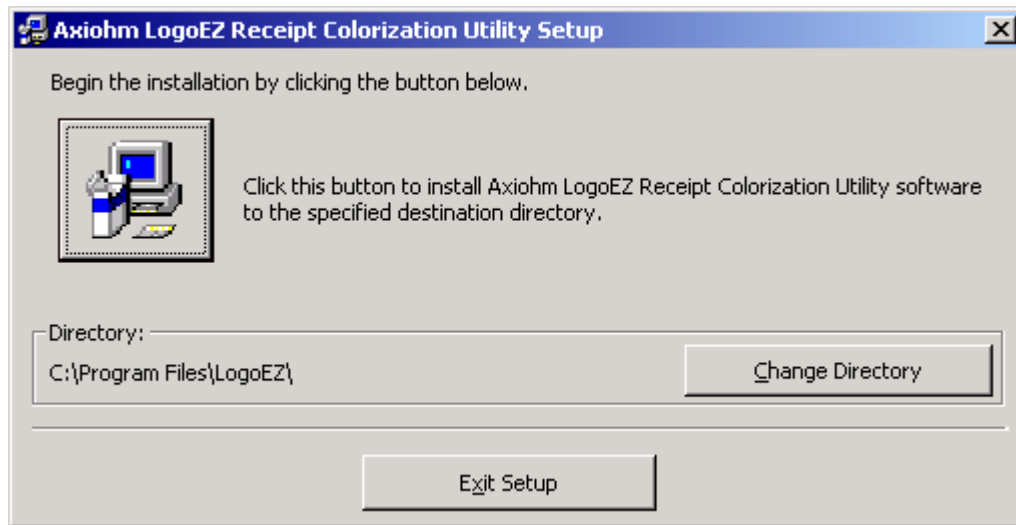
- *You can use black, red & black, or blue & black colored paper with the Axiohm. Please contact BSMGR Sales for more information.*
- *You cannot have LogoEZ and POS running at the same time.*

#### Loading LOGOEZ.EXE

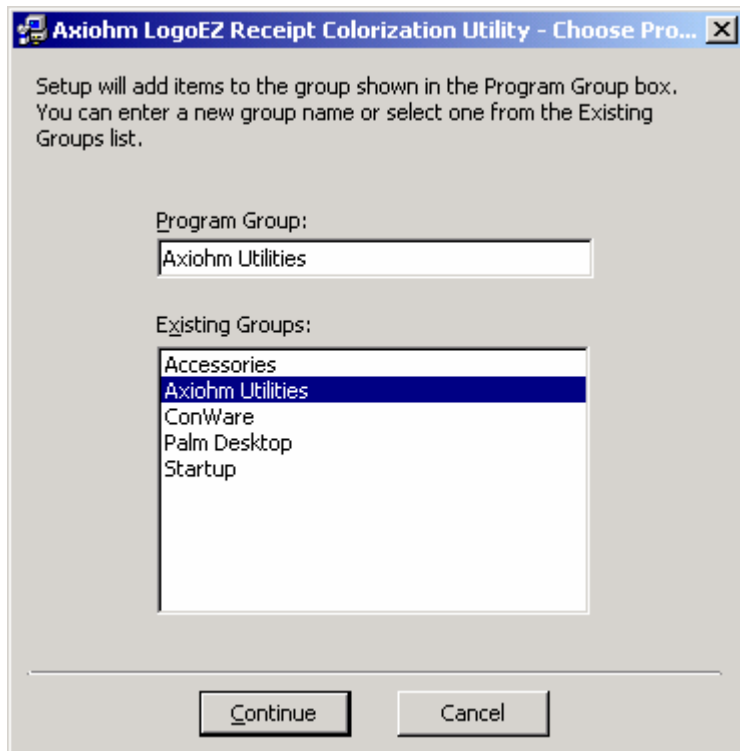
1. Go into My Computer.
2. Double click the on D:\
3. Double click the \ACU folder.
4. Double click the \LogoEZ folder.
5. Double click SETUP.EXE



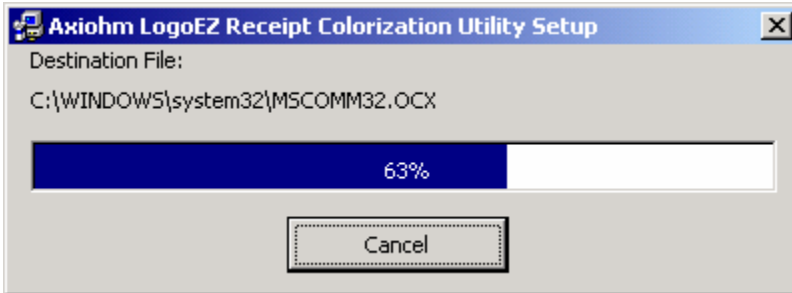
6. Click <OK>



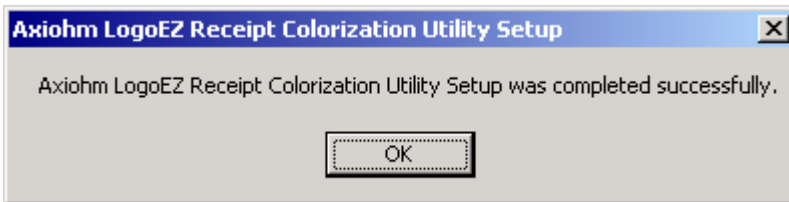
7. Click the Computer icon to start installing LogoEZ.



8. Click <Continue>

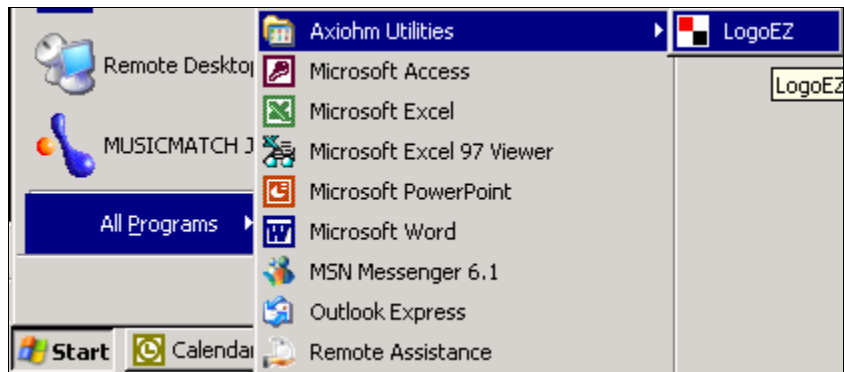


9. The copy status bar should go to 100% and then bring up the following screen



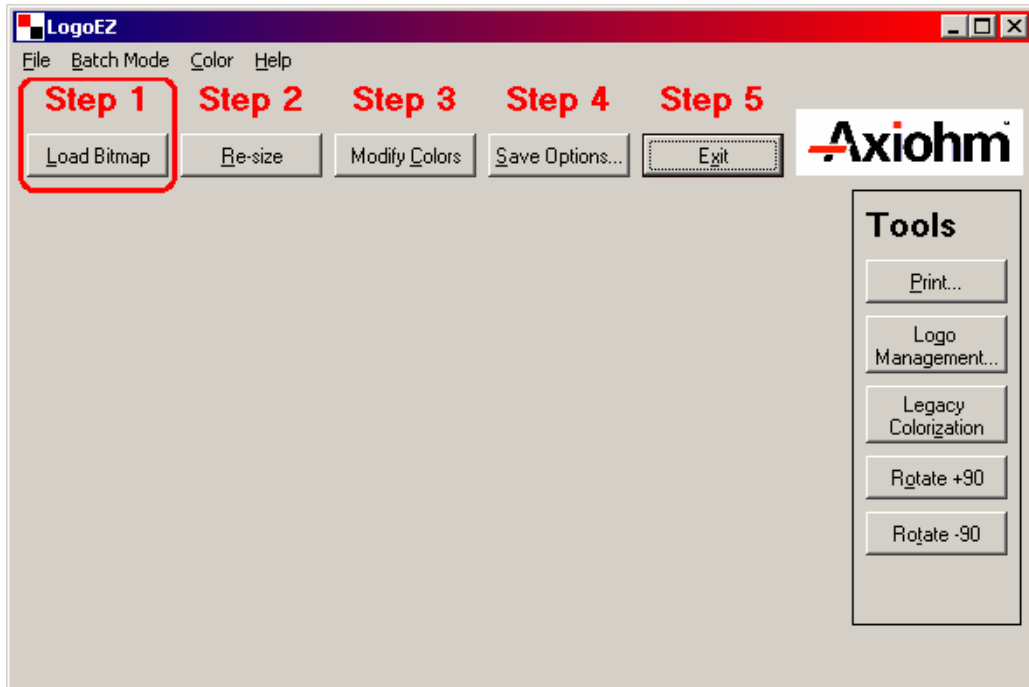
10. Click OK at "Setup was completed successfully"

## Starting LogoEZ



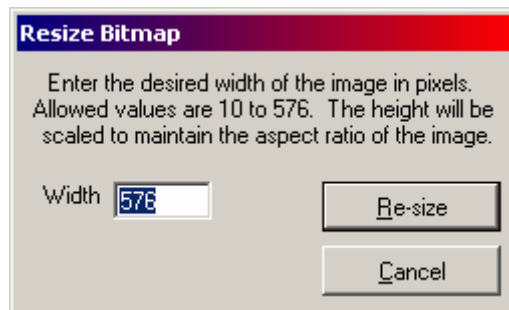
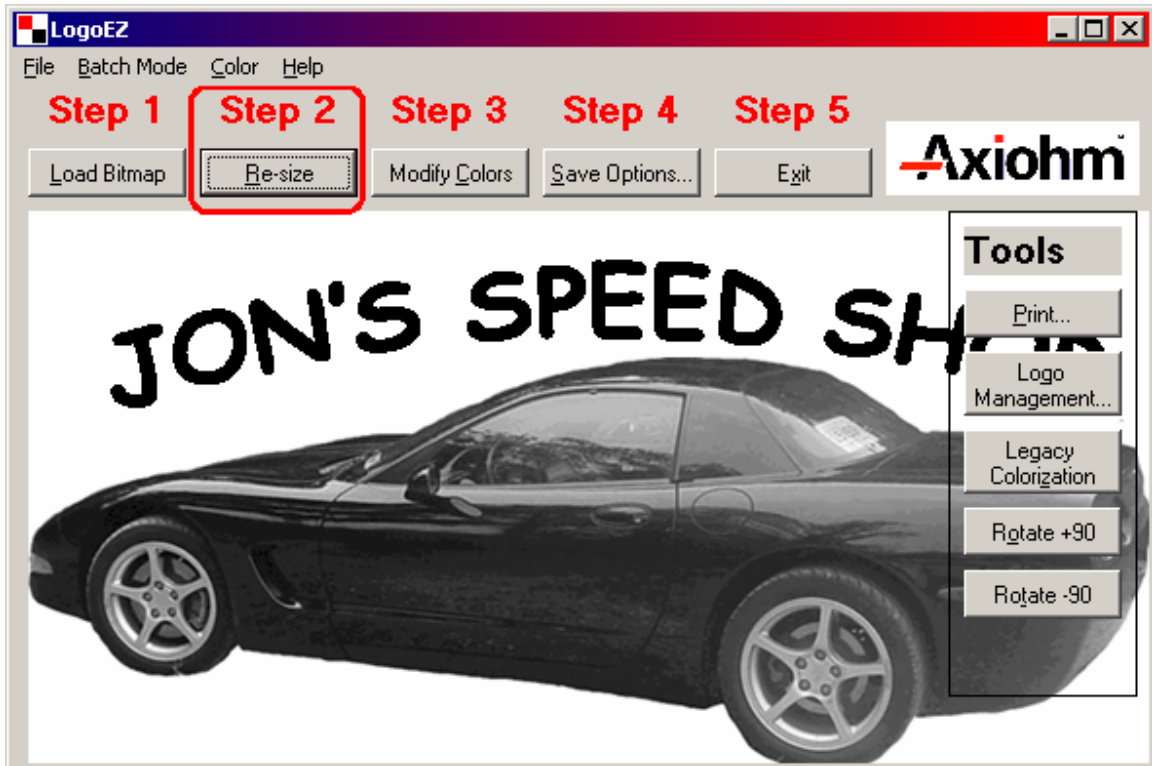
- To Start LogoEZ, click Start, click All Programs, click Axiohm Utilities, and then click LogoEZ.





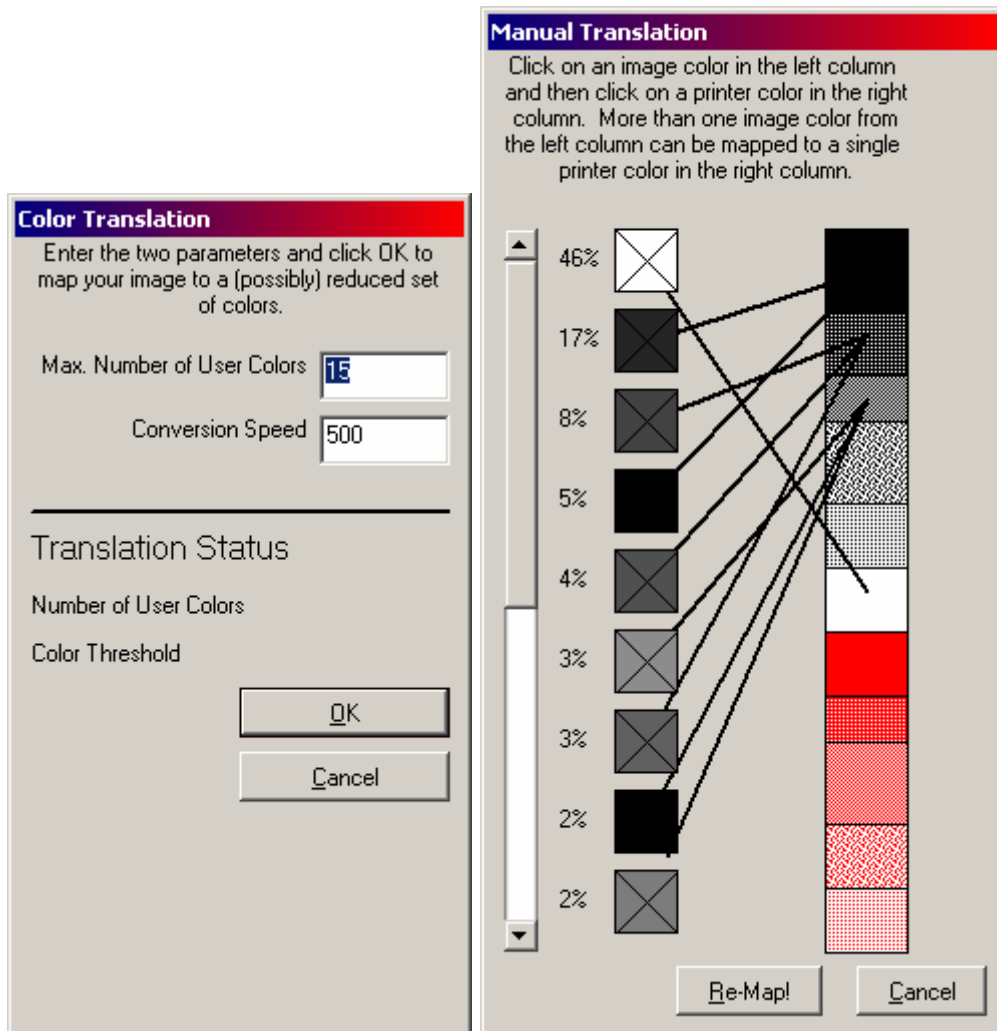
### **Step 1 – Main Menu**

- The first step is to load your image by clicking Load Bitmap. You must be using a .bmp picture file and it must be a grayscale image.



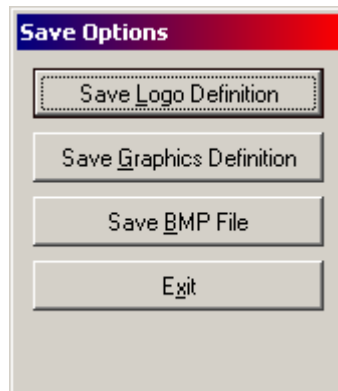
### **Step 2 – Main Menu**

- You may resize the image if needed by clicking Re-size. Your image can be up to 576 pixels wide.



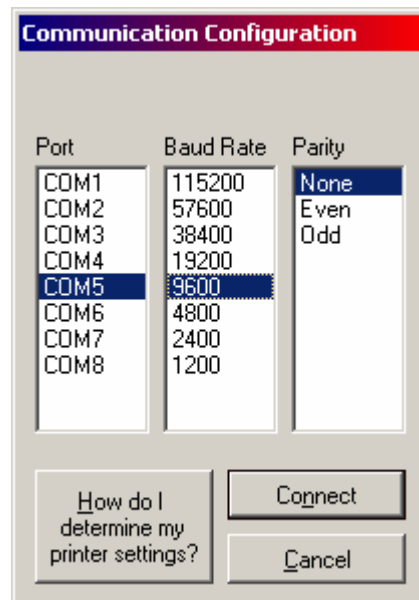
**Step 3 – Main Menu**

- Now you need to modify the colors so that it will print correctly. You will need to match the colors to the closest color possible and then click Re-Map.

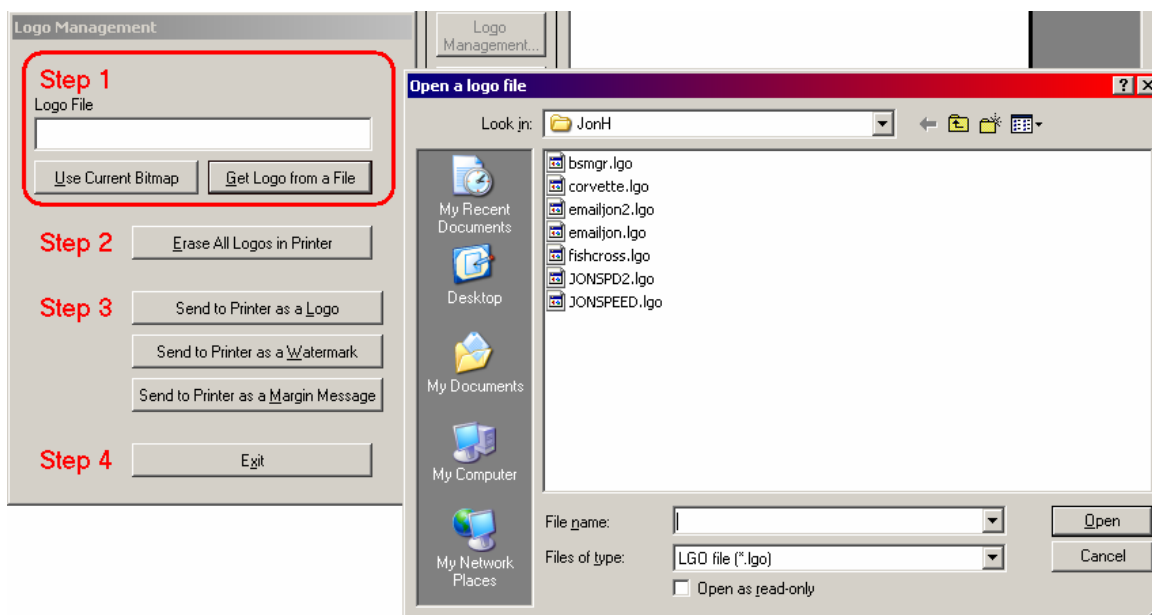


### **Step 4 – Main Menu**

- Now click on Save options and then click Save Logo Definition. Name the logo and click Save.

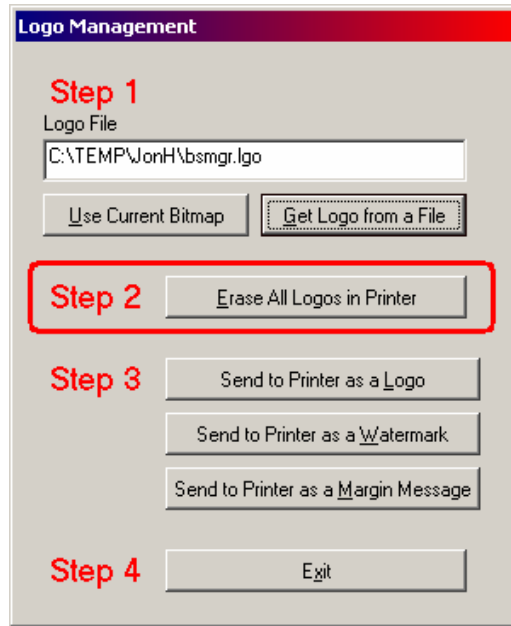


- Click Logo Management on the right
- Select the COM port that the Axiohm is connected to and select Baud Rate of 9600 and Parity None and click Connect.



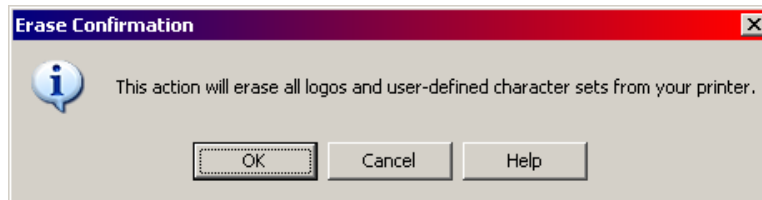
### **Step 1 – Logo Management**

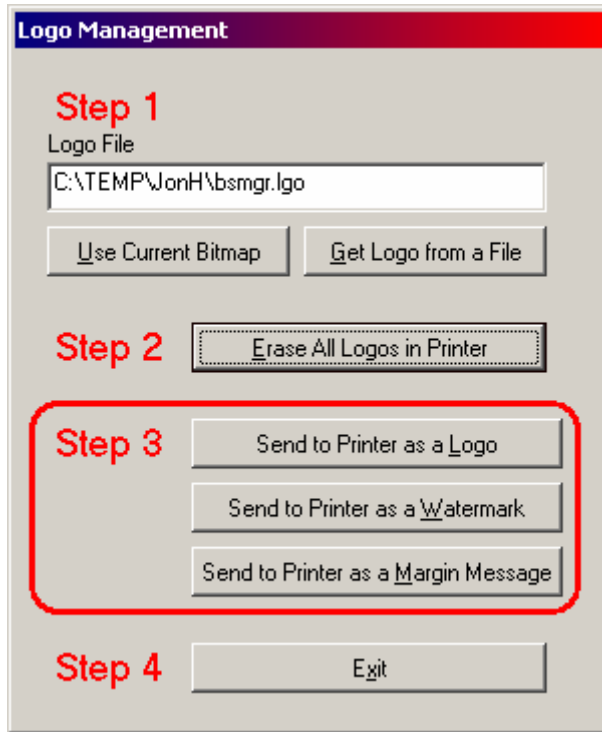
- Select Get Logo from File and then highlight your .lgo file and click Open.



### **Step 2 – Logo Management**

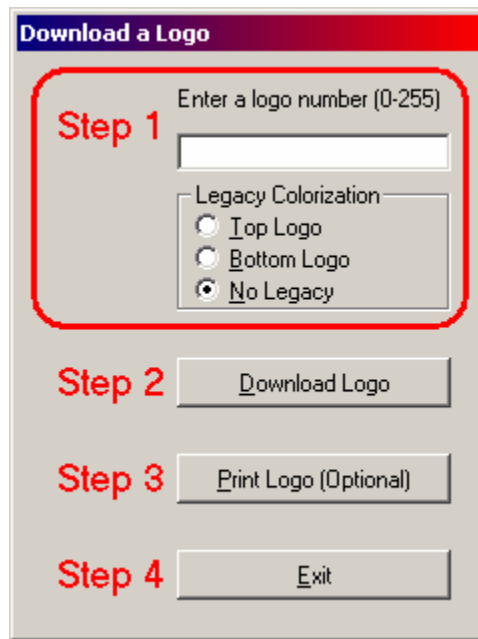
- Click Erase All Logos in Printer if this is your first time to add logos to the printer or if you would like to just erase all of the logos, select this option. You will see the following message, click OK.





**Step 3 – Logo Management**

- If you are wanting just a logo for your receipts with no watermark, click Send to Printer as Logo and enter a 0 (zero) for the logo number. This will be used later as your index # in BSMGR so remember this number! (Sys config 7029) Then click Download Logo. You have the option to print the logo before you exit.



**Define Watermark**

To create a watermark, you must first save the bitmap as a logo, and then convert the logo to a watermark by applying a level of shading.

Enter a logo number (0-255)

**Step 1**

Legacy Colorization

Select a Shading Value

**Step 2** Dark  Light

Enter a watermark number (0-255)

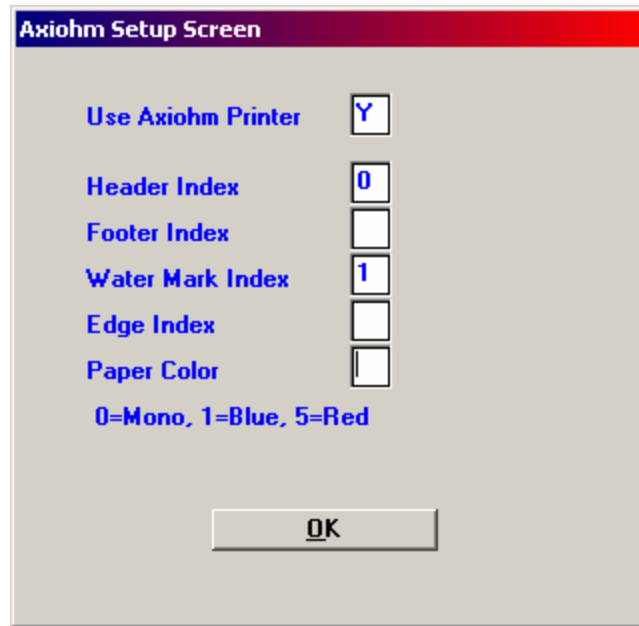
**Step 3**

**Step 4**

**Step 5**

**Step 6**

- If you are wanting to have a logo and a watermark, then you will want to select the Send to Printer as Watermark. Then for the logo number, enter a 0 (zero) This will be used later as your index # in BSMGR so remember this number! (Sys config 7029). Then select your desired shading value for the watermark. Then for watermark number, enter 1 (again remember this number, it will be your Index number.) Then click Define Watermark. Then you have the option to click Print Sample or you can exit. Your numbers can be any number from (1-9). It will overwrite the other logos if you use the same number.



Now you will need to setup BSMGR for the logos in Sys Config line 7029. You would use the settings above because we told LogoEZ that the logo index was 0 and the watermark index was 1. Header Index is the top of the receipt. Footer is the bottom of the receipt. Watermark is the Watermark on the receipt which prints the logo behind the normal receipt text. Edge is the edge of the receipt and paper color is the color of paper to use. If using thermal Black, use 0. If using Black and Blue, use 1. If using Black and Red, use 5. When finished, click OK and press F5 and Save. Finally, exit all the way out of BSMGR and go back in to POS. After going back into POS, it should be printing with the new graphics.

**\*\*\*NOTE\*\*\*** *If you have multiple Axiohm receipt printers, you need to load the images with the same index numbers on all of them. To do this, you will need to go to F:\Temp\LogoEZ 2.4.2\ and run the Setup program. Follow the same instructions above to install and use LogoEZ program.*